

Atodiad Ch



Pecyn Cefndirol Background Pack Ysgol Llanaelhaearn

Cyfarfod Lleol 1 – 26 Mehefin 2019		Local Meeting 1 – 26 June 2019
Agenda	1	Agenda
Cyflwyniad	2	Presentation
Cofnodion y Cyfarfod - Cymraeg	5	Meeting Minutes - Welsh
Cofnodion y Cyfarfod – Saesneg	8	Meeting Minutes - English
Cyfarfod Lleol 2 – 9 Medi 2019		Local Meeting 2 – 9 September 2019
Agenda	11	Agenda
Cyflwyniad Cymraeg	12	Welsh Presentation
Cyflwyniad Saesneg	16	English Presentation
Cofnodion y Cyfarfod - Cymraeg	20	Meeting Minutes - Welsh
Cofnodion y Cyfarfod – Saesneg	24	Meeting Minutes - English
Cyfarfod Lleol 3 – 30 Medi 2019		Local Meeting 3 – 30 September 2019
Agenda	29	Agenda
Cyflwyniad Cymraeg	30	Welsh Presentation
Cyflwyniad Saesneg	32	English Presentation
Cofnodion y Cyfarfod - Cymraeg	36	Meeting Minutes - Welsh
Cofnodion y Cyfarfod – Saesneg	38	Meeting Minutes - English
Mewnbwn yn dilyn Cyfarfodydd Lleol	40 / 41	Input following Local Meetings

Ysgol Llanaelhaearn

19:30 – 21:00, Dydd Llun/*Monday*, 24 Mehefin/*June* 2019
Canolfan Y Babell, Llanaelhaearn

1. **CROESO (Garem Jackson, Pennaeth Addysg)**
Welcome (Garem Jackson, Head of Education)

2. **GEIRIAU AGORIADOL YR AELOD CABINET DROS ADDYSG (Cyng. Cemlyn Williams)**
OPENING WORDS FROM CABINET MEMBER FOR EDUCATION (Cllr. Cemlyn Williams)

3. **CYFLWYNIAD AR Y SEFYLLFA BRESENNOL (Gwern ap Rhisiart, Swyddog Addysg Ardal Dwyfor a Meirionnydd)**
PRESENTATION ON THE CURRENT SITUATION (Gwern ap Rhisiart, Dwyfor and Meirionnydd Area Education Officer)

4. **TRAFODAETH**
DISCUSSION

5. **CAMAU NESAF**
NEXT STEPS

6. **CLOI**
CLOSE

Adolygu Sefyllfa Ysgol Llanaelhaearn



Parch • Gwasanaethu • Positif • Gweithio fel tîm • Gwerth am arian
Respect • Serving • Positive • Working as a team • Value for money

www.gwynedd.llyw.cymru



Agenda

- Geiriau agoriadol yr Aelod Cabinet dros Addysg
Cabinet Member for Education's opening words
- Y sefyllfa bresennol
The current situation
- Trafodaeth
Discussion
- Camau nesaf
Next steps

Parch • Gwasanaethu • Positif • Gweithio fel tîm • Gwerth am arian
Respect • Serving • Positive • Working as a team • Value for money



Cyng. Cemlyn Rees Williams

- Ein bwriad heddiw yw i adolygu sefyllfa bresennol Ysgol Llanaelhaearn, oherwydd pryder yn y nifer o ddisgyblion ar y gofrestr.
Our aim today is to review Ysgol Llanaelhaearn's current situation, due to concerns over the number of pupils on the register.
- Amcan y cyfarfod yw i lunio a thrafod gwahanol opsiynau posibl ar gyfer dyfodol yr ysgol.
The purpose of this meeting is to draw up and discuss possible options for the school's future.
- Mae'n bwysig i ni ein bod yn derbyn eich mewnbwn chi yn y broses.
It is important that we receive your input in the process.
- Byddwn yn cynnal un neu ddau gyfarfod pellach er mwyn cytuno ar opsiwn ffafredig i mi ei gyflwyno i Gabinet Cyngor Gwynedd yn yr Hydref.
We will hold one or two further meetings to agree on a preferred option to present to Gwynedd Council's Cabinet in the Autumn.

Parch • Gwasanaethu • Positif • Gweithio fel tîm • Gwerth am arian
Respect • Serving • Positive • Working as a team • Value for money



Y Sefyllfa Bresennol / The Current Situation

Gwern ap Rhisiart
Swyddog Addysg Ardal

Parch • Gwasanaethu • Positif • Gweithio fel tîm • Gwerth am arian
Respect • Serving • Positive • Working as a team • Value for money



Niferoedd / Numbers

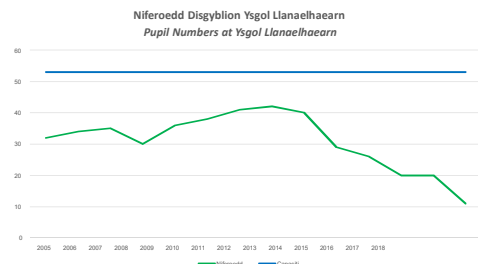
Nifer ar y gofrestr Medi 2018 (M – Bl6) <i>Number on roll September 2018 (N – Yr6)</i>	Capasiti Llawn (M – Bl6) <i>Full Capacity (N – Yr6)</i>	Nifer o Lefydd Gwag 2018 (M – Bl6) <i>Number of Surplus Places 2018 (N – Yr6)</i>	% o Lefydd Gwag 2018 (M – Bl6) <i>% of Surplus Places 2018 (N – Yr6)</i>
11	53	42	79%

Ffynhonnell : Cyfrifiad Medi 2018
Source: Census September 2018

Parch • Gwasanaethu • Positif • Gweithio fel tîm • Gwerth am arian
Respect • Serving • Positive • Working as a team • Value for money



Niferoedd / Numbers



Ffynhonnell: Gwefan Cyngor Gwynedd
Source: Gwynedd Council Website

Parch • Gwasanaethu • Positif • Gweithio fel tîm • Gwerth am arian
Respect • Serving • Positive • Working as a team • Value for money



Niferoedd / Numbers

		Dalgyrch Cartref / Home Catchment Area (Medi / September 2018)		Cyfanswm Ysgol M-B16 School Total N-Yr6
		Llanaelhaearn	Arall Other	
Mynychu Ysgol / School Attending (Medi / September 2018)	Llanaelhaearn	11	-	11
	Arall Other	28		
Cyfanswm Dalgyrch Catchment Area Total		39		

Ffynhonnell: Cyfrifiad Medi 2018
Source: Census September 2018

Parch • Gwasanaethu • Positif • Gweithio fel tîm • Gwerth am arian
Respect • Serving • Positive • Working as a team • Value for money

Maint dosbarthiadau 2018/19 Class sizes

Ysgol School	Meithrin Nursery	Derbyn Reception	BI 1 Yr: 1	BI 2 Yr: 2	BI 3 Yr: 3	BI 4 Yr: 4	BI 5 Yr: 5	BI 6 Yr: 6	Cyfanswm Total
Llanaelhaearn	0	3	1	2	0	2	1	2	11

Nifer y dosbarthiadau No. of Classes	Dosbarth mwyaf Largest Class	Dosbarth lleiaf Smallest Class	Maint dosbarth ar gyfartaledd Average Class Size
2	6	5	6

Ffynhonnell: Cyfrifiad Medi 2018
Source: Census September 2018

Parch • Gwasanaethu • Positif • Gweithio fel tîm • Gwerth am arian
Respect • Serving • Positive • Working as a team • Value for money

Rhagamcanion / Projections

	M	0	1	2	3	4	5	6	Cyfanswm Total
Medi 2018 September 2018	0	3	1	2	0	2	1	2	11
Amcangyfrif Medi 2019 September 2019 Projection	2	0	3	1	2	0	2	1	11
Amcangyfrif Medi 2020 September 2020 Projection	0	2	0	3	1	2	0	2	10
Amcangyfrif Medi 2021 September 2021 Projection	0	0	2	0	3	1	2	0	8

Ffynhonnell: Cyfrifiad Medi 2018
Source: Census September 2018

- Dengys y rhagamcanion y bydd 8 disgybl yn mynychu'r ysgol yn 2021
Projections indicate that numbers at Ysgol Llanaelhaearn will decrease to 8 pupils by September 2021
- Gwyddom bellach mai 8 fydd yn mynychu'r ysgol ym mis Medi 2019
It is now apparent that 8 pupils will be attending the school in September 2019.

Parch • Gwasanaethu • Positif • Gweithio fel tîm • Gwerth am arian
Respect • Serving • Positive • Working as a team • Value for money

Cyllideb Ysgol 2019-20 / School budget 2019-20

Ysgol School	CYLLIDEB 2019-20 / 2019-20 BUDGET			
	Dyranïad / Allocation	Gwarchodweth lleiafswm staffio* / Minimum staffing protection*	Cyfanswm cyllideb / Total budget	Cyfratalodd y Disgybl / Average per pupil
Llanaelhaearn	£95,635	£43,744	£39,379	£12,971
Cyfratalodd Ysgolion Cynradd y Sir / County Average Primary			£404,000	£3,884

Ffynhonnell: Dyranïad Cyllid Ysgolion Cynradd 2019-20
Source: Primary Schools Budget Allocation 2019-20

*Mae'r polïcy gwarchodweth yn sicrhau o leiaf pen-swth ac atirwyd allweddol ym mhob Ysgol ysgol gyda mwy na 15 disgybl, a pen-swth a gwybodaeth ddarparu mwy na 15 disgybl.
*The minimum staffing protection policy ensures a minimum of headteacher and teacher of every school which has more than 15 pupils, and a headteacher and a classroom assistant in a school with fewer than 15 pupils.

- Diffyg o £14,482 yng nghyllideb eleni / £14,482 deficit in this year's budget
- Defnyddio balansau i fanteoli'r gyllideb eleni / Balances used to offset the deficit this year
- Wedi hyn, ni fydd y gyllideb yn ddigonol i gynnal y strwythur staffio presennol / From 2020/21, the budget will not sustain the current staffing structure

Parch • Gwasanaethu • Positif • Gweithio fel tîm • Gwerth am arian
Respect • Serving • Positive • Working as a team • Value for money

Sefyllfa staffio / Staffing situation

Rôl / Role	
Pennaeth / Headteacher	1 diwrnod yr wythnos 1 day a week
Athrawes / Teacher	Llawm amser - 80% arweinyddiaeth / 20% athrawes Full time - 80% leadership / 20% teacher
Uwch-gymhorthydd / Senior Classroom Assistant	34 awr yr wythnos 34 hours a week
Cymhorthydd ADY / SEN Assistant	(grant ychwanegol) (additional grant)
Llanw / Supply	1 diwrnod yr wythnos 1 day a week

Parch • Gwasanaethu • Positif • Gweithio fel tîm • Gwerth am arian
Respect • Serving • Positive • Working as a team • Value for money

Cyflwr yr adeilad / Building condition

- Cafodd yr archwiliad cyflwr adeilad diwethaf ei gynnal ym mis Ebrill 2018
The Building was last inspected in April 2018
- Adnabuwyd gwerth £100mil o waith bryd hynny
£100k worth of work was identified at that time
- Cyflwr wedi gwaethygu ers yr archwiliad diwethaf ac felly costau yn debygol o fod yn uwch
Condition has deteriorated since the last inspection and costs are likely to be higher
- Gwaith cynnal a chadw rhaglednedig ac adweithiol wedi parhau fel yr arfer
Reactive and planned maintenance has continued as usual

Parch • Gwasanaethu • Positif • Gweithio fel tîm • Gwerth am arian
Respect • Serving • Positive • Working as a team • Value for money

Crynodeb / Summary :

Prif heriau Ysgol Llanaelhaearn <i>Key challenges</i>	
1	Nifer isel o ddisgyblion <i>Low pupil numbers</i>
2	Cost y disgybl dair gwaith yn uwch na chyfartaledd y Sir <i>Cost per pupil three times the County average</i>
3	Cyllideb ddim yn ddigonol wedi diwedd y flwyddyn ariannol bresennol i gynnal y strwythur staffio <i>Next year, the budget won't be sufficient to maintain the current staffing structure</i>

Parch • Gwasanaethu • Positif • Gweithio fel tîm • Gwerth am arian
Respect • Serving • Positive • Working as a team • Value for money

Trafodaeth / Discussion

- Bydd y Cyngor yn ymgeisio i ystyried pob opsiwn posib i adfer y sefyllfa argyfyngus bresennol /
The Authority aspires to consider every possible option to resolve the current critical situation
- I'r perwyl hwn, rydym yn awyddus ein bod yn derbyn mewnbwn a gwybodaeth lleol ynglŷn a datrysiadau posib /
To this end, we are eager to receive local knowledge and input regarding possible solutions

Parch • Gwasanaethu • Positif • Gweithio fel tîm • Gwerth am arian
Respect • Serving • Positive • Working as a team • Value for money

Trafodaeth / Discussion

Dyma rai o'r opsiynau y byddwn yn eu asesu/
We will be assessing the viability of the following options:

1	Parhau gyda'r sefyllfa bresennol <i>Continue with the current arrangements</i>
2	Ffedereiddio gydag ysgol arall <i>To create a Federation with a nearby school</i>
3	Cau Ysgol Llanaelhaearn a symud y disgyblion i ysgol amgen <i>Discontinue Ysgol Llanaelhaearn and relocate pupils to an alternative school</i>

Parch • Gwasanaethu • Positif • Gweithio fel tîm • Gwerth am arian
Respect • Serving • Positive • Working as a team • Value for money

Camau nesaf / Next steps

- Gorffennaf 2019** - Cyflwyno unrhyw gwestiynau neu sylwadau ychwanegol erbyn 1 Gorffennaf:
ModerneiddioAddysg@gwynedd.llyw.cymru
- Medi 2019** - Cyfarfod i drafod canlyniadau asesu'r opsiynau, a chyfarfod pellach i gytuno a phenderfynu ar opsiwn ffafredig.
- Hydref 2019** - Aelod Cabinet i gyflwyno opsiwn ffafredig i Gabinet Cyngor Gwynedd ei ystyried.

Parch • Gwasanaethu • Positif • Gweithio fel tîm • Gwerth am arian
Respect • Serving • Positive • Working as a team • Value for money

Camau nesaf / Next steps

- July 2019** – Present additional questions or comments by 1st July:
ModernisingEducation@gwynedd.llyw.cymru
- September 2019** – Meeting discuss the options assessment. Further meeting to agree and decide a preferred option.
- October 2019** – Cabinet Member for Education to present the preferred option to Gwynedd Council's Cabinet for consideration.

Parch • Gwasanaethu • Positif • Gweithio fel tîm • Gwerth am arian
Respect • Serving • Positive • Working as a team • Value for money

Cyfarfod Adolygu Ysgol Llanaelhaearn

Addysg

Cyfarfod o: Adolygu Ysgol Llanaelhaearn	Dyddiad: 24/06/2019 7:30yh Lleoliad: Canolfan y Babell, Llanaelhaearn
--	--

Presennol:	<u>Swyddogion:</u> Gwern ap Rhisiart (GapRh); Garem Jackson (GJ); Cyng. Cemlyn Williams (CW); Ffion Jones (FfJ); Betsan Williams (BW);
	<u>Ar ran Llywodraethwyr Ysgol Llanaelhaearn:</u> 9 Aelod
	<u>Rhieni/Teulu</u> 7 Aelod
Ymddiheuriadau:	2 Aelod

Rhif Eitem	Eitem / Pwnc	Gweithrediad
1.	CROESO	<ul style="list-style-type: none"> Croesawyd pawb i'r cyfarfod gan Garem Jackson, Pennaeth Addysg Gwynedd a diolchwyd am bresenoldeb pawb. Cafwyd cyflwyniad byr ar bwrpas y cyfarfod yma. Cadarnhawyd fod Y Cabinet wedi cymeradwyo i adolygu sefyllfa a dyfodol yr ysgol 4 Mehefin 2019. Eglurwyd y bydd Swyddogion Addysg yn ceisio ateb unrhyw gwestiynau a bydd cyfle ar y diwedd i glywed barn pawb.
2.	GEIRIAU AGORIADOL YR AELOD CABINET DROS ADDYSG	<ul style="list-style-type: none"> Cafwyd cyflwyniad pellach gan y Cynghorydd Cemlyn Williams. Eglurwyd bydd y Cynghorydd yn cyflwyno'r opsiwn ffafredig i Gabinet yn Hydref yn dilyn cyfarfodydd pellach ym mis Medi.
3.	CYFLWYNIAD AR Y SEFYLLFA BRESENNOL	<ul style="list-style-type: none"> Aethpwyd drwy'r cyflwyniad â oedd yn dangos sefyllfa bresennol yr ysgol (gwybodaeth Medi 2018). Eglurwyd bydd cyfnod ar ôl y cyfarfod i roi barn a gofyn cwestiynau gyda sylwadau i'w derbyn erbyn 1af Gorffennaf. Bydd swyddogion yn mynd nôl i'r cyfarfod ym Medi gydag atebion a chanfyddiadau. Aethpwyd drwy heriau presennol yr ysgol ac yna drwy opsiynau sydd wedi codi ar hyn o bryd fydd yn cael eu hasesu. Mae cyfle i gael trafodaeth a dod fyny gyda mwy o opsiynau posib ar ddiwedd y cyfarfod.
4.	TRAFODAETH	<ul style="list-style-type: none"> Eglurwyd bod yn rhaid i'r Cyngor fynd drwy bob un opsiwn posib a'i asesu. Codwyd mater ar ran y Llywodraethwyr y dylai'r camau hyn fod wedi eu cymryd peth amser yn ôl. Cred y Llywodraethwyr fod yr Awdurdod yn rhannol gyfrifol am adael i'r niferoedd gwmpo yn dilyn cyfarfodydd lleol rai blynyddoedd yn ôl, a bod si yn lleol fod yr ysgol am gau yn ei gwneud yn anoddach i ddenu teuluoedd i ddewis gyrru eu plant i'r ysgol. Nodwyd y pwyntiau a godwyd gan y Llywodraethwyr ond ategwyd mai prif bwrpas y cyfarfod oedd trafod y sefyllfa bresennol datrysiadau posibl i'r heriau sydd yn wynebu'r ysgol. Dyma'r opsiynau â gyflwynwyd yn ystod y cyfarfod. <ul style="list-style-type: none"> Uned cyfeirio Cynigiwyd i drio codi niferoedd plant Ysgol Llanaelhaearn i fyny er mwyn balansio'r niferoedd. Gofynnwyd i'r Cyngor drio yn galed i wneud newid i'r ysgol. Mae angen

Parch • Gwasanaethu • Positif • Gweithio fel tîm • Gwerth am arian
Respect • Serving • Positive • Working as a team • Value for money

		<p>teuluoedd ifanc yn y Pentref i godi niferoedd. Gofynnwyd a oes posibil i Gyngor Gwynedd ddylanwadu ar bwy sydd yn symud i fyw i'r pentref, e.e. drwy flaenoriaethu teuluoedd ifanc lleol mewn proses dyrannu tai cymdeithasol. Mynegwyd fod pobl wedi dod yma i fyw ac wedi clywed fod yr ysgol yn cau ac felly maent yn mynychu ysgol gyfagos gyda niferoedd cynaliadwy.</p> <ul style="list-style-type: none"> – Safonau cyn uchred â phob ysgol arall yn y dalgylch. Mae'n amhosib trio gwerthu'r ysgol/y lle i deuluoedd. – Gofynnwyd os oes modd paratoi gwybodaeth i rieni a fyddai'n cadarnhau nad yw'r ysgol yn cau ddiwedd tymor Haf 2019. – Gofynnwyd am warant o 5 mlynedd er mwyn benthyg amser i godi niferoedd yr ysgol. – Eglurwyd ystyr ffederaleiddio. 'Ffederaleiddio' anffurfiol yw'r trefniant sydd mewn lle ar hyn o bryd o rannu Pennaeth gydag ysgolion eraill. Mae creu Ffederasiwn ffurfiol yn broses cyfreithiol ble mae dwy neu fwy o ysgolion yn dod at ei gilydd i greu Ffederasiwn. Byddai'r ysgolion yn parhau i fod yn ysgolion ar wahân ond gydag un Corff Llywodraethu. – Nodwyd nad oes toriadau wedi bod i gyllidebau ysgolion gan y Cyngor ac mai grant gwella addysg Cymru sydd wedi lleihau yn sylweddol dros y blynyddoedd diwethaf. – Codwyd yr opsiwn i ffederaleiddio gyda 3 ysgol lle mae'r Pennaeth yn arwain ar hyn o bryd sef gydag Ysgol Chwilog ac Ysgol Garndolbenmaen ond eglurwyd fod angen rhyddhau'r Pennaeth i sicrhau ei fod yn cael 80% o amser digyswllt. Byddai rhaid sicrhau fod budd i'r ysgolion eraill o ffederaleiddio gydag Ysgol Llanaelhaearn. – Gofynnwyd a oes posibil i Gyngor Gwynedd yrru llythyr allan i rieni sydd â disgyblion yn mynychu ysgolion all-dalgylch. Nid yw'r Cyngor yn gallu gwneud hyn gan y bydd yn torri gyfraith mynediad ysgolion drwy geisio dylanwadu ar ddewis rhieni. Mae gan rieni yr hawl i ddewis pa ysgol mae eu plant yn cael mynychu - nid oes gan y Cyngor reolaeth dros hyn. Cynigwyd y byddai Swyddogion Addysg yn fodlon gwirio unrhyw lythyr y byddai'r Corff yn ei ysgrifennu at rieni er mwyn rhoi cymorth gyda geiriad a strwythur llythyr o'r fath. – Aethpwyd drwy opsiynau i weld sut mae posibil cynyddu niferoedd plant – clwb brecwast, clwb ar ôl ysgol, gofal plant a.y.b. ond bydd angen gwneud hyn erbyn Medi. Bydd modd holi'r tîm Blynyddoedd Cynnar am ddata parthed y galw am y gwasanaethau hyn yn yr ardal. – Cynigiwyd agor caffi yn yr ysgol er mwyn i bobl y pentref ddefnyddio'r ysgol, ac i godi arian i gyfrannu tuag at gostau cynnal yr adeilad. <ul style="list-style-type: none"> • Mynegwyd bod angen gwneud mwy o eitemau ar y radio, teledu a papur newydd i gael neges am yr ysgol yn gryfach drosodd i'r cyhoedd. • Gofynnwyd beth mae ysgolion eraill yn ei wneud i godi ymwybyddiaeth. Maent yn cynnal cyngherddau, noson goffi ac ati i godi proffil yr ysgol.
5.	CAMAU NESAF	<ul style="list-style-type: none"> • Pwysleisiwyd fod opsiynau wedi eu trafod a bydd angen mynd ati i'w asesu a gwneud gwaith ymchwil arnynt. • Byddwn yn cynnal cyfarfodydd pellach ym mis Medi er mwyn cytuno ar opsiwn ffafredig a bydd yr Aelod Cabinet dros Addysg yn cyflwyno unrhyw gynnig i Gabinet Cyngor Gwynedd fis Hydref. Pe byddai'r opsiwn hwn yn gofyn am ddilyn trefn statudol, eglurwyd byddwn yn dilyn y broses statudol rhwng Hydref 2019 i Mai 2020. • Pwysleisiwyd fod pob adroddiad cabinet yn gyhoeddus ac felly mae posibil gweld y rhain ar y we. • Erbyn y cyfarfod nesaf bydd syniadau pawb wedi cael eu rhoi at eu gilydd ac bydd

		<p>gwaith ymchwil ac asesiadau wedi eu cynnal ar gyfer yr opsiynau. Yn ystod y cyfarfod ym Medi, byddwn yn trafod y canfyddiadau gan gytuno ar opsiwn ffafredig a fyddai'n ateb yr heriau y mae'r ysgol yn ei wynebu.</p>
6.	CLOI	<ul style="list-style-type: none">• Diolchwyd i bawb am fynychu y cyfarfod ac bydd y cyfarfod nesaf yn cael ei gynnal ym mis Medi.

Ysgol Llanaelhaearn Review Meeting

Addysg

Meeting:	Ysgol Llanaelhaearn Review	Date: 24/06/2019 7:30pm
		Location: Canolfan y Babel, Llanaelhaearn

Present:	<p><u>Officers:</u> Gwern ap Rhisiart (GapRh); Garem Jackson (GJ); Cyng. Cemlyn Williams (CW); Ffion Jones (FfJ); Betsan Williams (BW);</p> <p><u>On behalf of the Governors of Ysgol Llanaelhaearn:</u> 9 Members</p> <p><u>Parents/Family</u> 7 Members</p>
Apologies:	2 Members

Item Number	Item / Subject	Action
1.	WELCOME	<ul style="list-style-type: none"> Garem Jackson, Gwynedd's Head of Education welcomed everyone to the meeting and thanked everyone for their attendance. A brief presentation was given on the purpose of this meeting. It was confirmed that the Cabinet had approved to review the position and future of the school on 4 June 2019. It was explained that the Education Officers will try and answer any questions and there will be an opportunity at the end to hear everyone's views.
2.	CABINET MEMBER FOR EDUCATION'S OPENING WORDS	<ul style="list-style-type: none"> A further presentation was given from Councillor Cemlyn Williams. It was explained that the Councillor will present the preferred option to Cabinet in October following further meetings in September.
3.	PRESENTATION ON THE CURRENT POSITION	<ul style="list-style-type: none"> The Area Education Officer went through the presentation which showed the current position of the school (September 2018 data). It was explained that there will be an opportunity after the meeting to discuss and ask questions with comments to be received by 1st July. Officers will return to the September meeting with answers and findings. The school's current challenges were explained and then options that have arisen at present that will be assessed. There is an opportunity for discussion and to come up with more possible options at the end of the meeting.
4.	DISCUSSION	<ul style="list-style-type: none"> It was explained that the Council must go through every possible option and assess them. An issue was raised on behalf of the Governors that these steps should have been taken some time ago. The Governors believe that the Authority is partially responsible for allowing the numbers to fall following local meetings some years ago, and that local rumors that the school is closing has made it more difficult to attract families to choose to send their children to the school. The matters raised by the Governors were noted but it was added that the main purpose of the meeting was to discuss the current situation of possible solutions to the challenges facing the school. The options presented during the meeting were: <ul style="list-style-type: none"> Referral unit It was proposed to try to increase the numbers of Ysgol Llanaelhaearn's children in

Parch • Gwasanaethu • Positif • Gweithio fel tîm • Gwerth am arian
Respect • Serving • Positive • Working as a team • Value for money

		<p>order to balance the numbers.</p> <ul style="list-style-type: none"> – The Council was asked to try hard to make a change to the school. Young families in the village are needed to increase numbers. It was asked if it is possible for Gwynedd Council to influence who moves to the village, e.g. by prioritising local young families in a social housing allocation process. It was stated that people had come here to live and had heard that the school was closing and therefore they were attending a nearby school with sustainable numbers instead. – Standards are as high as all other schools in the catchment area. It is impossible to try and sell the school/place to families. – It was asked if information could be prepared for parents which would confirm that the school is not closing at the end of the Summer term 2019. – A 5 year warranty was requested to borrow time to increase school numbers. – The meaning of federalisation was explained. Informal federation is the current arrangement for sharing a Headteacher with other schools. Creating a formal Federation is a legal process where two or more schools come together to form a Federation. The schools would remain separate schools but with one Governing Body. – It was noted that there have been no cuts to school budgets by the Council and that the Welsh education improvement grant has reduced significantly in recent years. – The option to federate was raised with 3 schools where the Headteacher currently leads namely Ysgol Chwilog and Ysgol Garndolbenmaen but it was explained that the Headteacher needed to be released to ensure that he had 80% non-contact time. It would be necessary to ensure that the other schools would benefit from federating with Ysgol Llanaelhaearn. – It was asked if it is possible for Gwynedd Council to send out a letter to parents whose pupils attend out of area schools. The Council is unable to do this as it will be in breach of school admissions law by trying to influence parental choice. Parents have the right to choose which school their children can attend - the Council has no control over this. It was proposed that Education Officers would be willing to check any letter that the Body wrote to parents to assist with the wording and structure of such a letter. – Options were explored to see how to increase child numbers - breakfast club, after school club, childcare etc. but this will need to be done by September. It will be possible to ask the Early Years team for data on the demand for these services in the area. – It was proposed to open a café at the school for the people of the village to use the school, and to raise money to contribute towards the running costs of the building. • It was stated that more items need to be made on radio, television and newspaper to get the message about the school stronger over to the public. • Asked what other schools are doing to raise awareness. They hold concerts, coffee evenings etc to raise the profile of the school.
5.	NEXT STEPS	<ul style="list-style-type: none"> • It was emphasised that options have been discussed and will need to be assessed and researched. • We will hold further meetings in September to agree a preferred option and the Cabinet Member for Education will present any proposal to Gwynedd Council's Cabinet in October. If this option required a statutory procedure, it was explained that we would follow the statutory process from October 2019 to May 2020. • It was emphasised that all cabinet reports are public and therefore these can be viewed on the internet.

		<ul style="list-style-type: none"> • By the next meeting everyone's ideas will have been collated and options research and assessments will have been undertaken. • During the September meeting we will discuss the findings and agree a preferred option that will answer the challenges that the school faces.
6.	TO CLOSE	<ul style="list-style-type: none"> • Everyone was thanked for attending the meeting and the next meeting will be held in September.

Adolygu Ysgol Llanaelhaearn

19:30 – 21:00, Dydd Llun, 9 Medi 2019

Canolfan Y Babell, Llanaelhaearn

1. **CROESO (Garem Jackson, Pennaeth Addysg)**
2. **GEIRIAU AGORIADOL YR AELOD CABINET DROS ADDYSG (Cyng. Cemlyn Williams)**
3. **CYFLWYNIAD – OPSIYNAU POSIBL (Gwern ap Rhisiart, Swyddog Addysg Ardal Dwyfor a Meirionnydd)**
5. **CAMAU NESAF**
6. **CLOI**

Adolygu Sefyllfa Ysgol Llanaelhaearn



Parch • Gwasanaethu • Positif • Gweithio fel tîm • Gwerth am arian
Respect • Serving • Positive • Working as a team • Value for money

www.gwynedd.llyw.cymru



Agenda

- Ymateb i gynigion y cyfarfod diwethaf
- Adolygu rhestr hir o opsiynau
- Camau nesaf

Parch • Gwasanaethu • Positif • Gweithio fel tîm • Gwerth am arian
Respect • Serving • Positive • Working as a team • Value for money



Asesiad opsiynau posibl

Gwern ap Rhisiart
Swyddog Addysg Ardal

Parch • Gwasanaethu • Positif • Gweithio fel tîm • Gwerth am arian
Respect • Serving • Positive • Working as a team • Value for money



Ymateb i gynigion

Sylwadau	Ystyriaethau
1 Oes posib i'r Adran Addysg geisio ymgyrchu i godi niferoedd yr ysgol?	Yn unol a'r Cod derbyn i ysgolion (005/2013): <i>Rhaid i Awdurdodau Lleol beidio ag awgrymu y dylai rhieni ddweud mai ysgol eu dalgylch lle y maent yn byw sydd orau ganddynt, na bod lle wedi'i neilltuo iddynt yn yr yr ysgol honno cyn iddynt fynegi eu dewis.</i> Nid oes hawl gan yr awdurdod i geisio dylanwadu ar ddewis rhieni.
2 Oes posib i Gyngor Gwynedd ddylanwadu ar bwy sydd yn symud i fyw i'r pentref	Mae Polisi Gosod Tai Cyffredin wedi ei gosod ar y cyd rhwng Gyngor Gwynedd, Cartrefi Cymunedol Gwynedd, Grŵp Cynefin a Thai Gogledd Cymru. Mae meini prawf dyraniad tai wedi ei fanylu yn y polisi hwn. Mae tenantiaid yn cael cynnig tai sydd o faint addas i'w amgylchiadau nhw (e.e. fel arfer tai tair llofft i deuluoedd gyda dau neu dri o blant). Mae pwy sydd yn cael cynnig tai ym mhentref Llanaelhaearn felly yn ddibynnol ar y polisi ac hefyd ar stoc tai yr ardal a beth sydd yn dod yn wag i'w osod.

Parch • Gwasanaethu • Positif • Gweithio fel tîm • Gwerth am arian
Respect • Serving • Positive • Working as a team • Value for money



Ymateb i gynigion

Sylwadau	Ymateb Cyngor Gwynedd
3 Oes modd paratoi gwybodaeth i rieni a fyddai'n cadarnhau nad yw'r ysgol yn cau ddiwedd tymor Haf 2019.	Ni fyddai'n briodol i'r Adran Addysg wneud hyn, gellir ymddangos fel tacteg i geisio dylanwadu ar ddewis rhieni. Er hyn, gall yr ysgol / Corff Llywodraethu lythru rhieni
4 Oes posib i Gyngor Gwynedd yrru llythyr allan i rieni sydd â disgyblion yn mynychu ysgolion all-dalgylch.	Nid yw'r Cyngor yn gallu gwneud hyn gan y bydd yn torri cyfraith mynediad ysgolion.

Parch • Gwasanaethu • Positif • Gweithio fel tîm • Gwerth am arian
Respect • Serving • Positive • Working as a team • Value for money



Opsiynau posibl

Parch • Gwasanaethu • Positif • Gweithio fel tîm • Gwerth am arian
Respect • Serving • Positive • Working as a team • Value for money



Rhestr hir o opsiynau

OPSIYNAU	
1.	Parhau gyda'r sefyllfa bresennol (Y 'Status Quo')
2.	Newid Strwythur Staffio
3.	Uned Arsyliw Blynnyddoedd Cynnar
4.	Ffederaleiddio
5.	Gwarant y bydd yr ysgol ar agor am o leiaf 5 mlynedd
6.	Cwlb gofal plant
7.	Caffi Cymunedol
8.	Cau Ysgol Llanaelhaearn a'r disgyblion i'w haddysgu mewn ysgol amgen

Parch • Gwasanaethu • Positif • Gweithio fel tîm • Gwerth am arian
Respect • Serving • Positive • Working as a team • Value for money



Opsiynau

- Rydym wedi ymchwilio'r 8 opsiwn yma.
- Mae pob opsiwn wedi ei ddatblygu ar ffurf 'SWOT analysis'
- Rydym yn awyddus i dderbyn eich mewnbwn i ddatblygu yr asesiadau hyn ymhellach

Parch • Gwasanaethu • Positif • Gweithio fel tîm • Gwerth am arian
Respect • Serving • Positive • Working as a team • Value for money



1. Parhau gyda'r sefyllfa bresennol

1. Cryfderau / Strengths	1. Gwendidau / Weaknesses
<ul style="list-style-type: none"> • Cadw ysgol yn Llanaelhaearn • Addysg cyfrwng Cymraeg i ddysgwyr • Ysgol o fewn pellder rhesymol i gartref dysgwyr y dalgylch • Ansawdd yr addysg a buddiannau'r ysgol • Dosbarthiadau bychain 	<ul style="list-style-type: none"> • Dosbarthiadau bychain • Niferoedd isel • Cost y disgybl uchel
1. Cyfleon / Opportunities	1. Bygythiadau / Threats
	<ul style="list-style-type: none"> • Rhagamcanion niferoedd • Diffyg yn y gyllideb • Llefydd gweigion • Costau cynnal yr adeilad – £100k ddim i weld fel bygythiad mawr • Dim ond 4 diwrnod di-gyswilt i'r Pennaeth (tair ysgol) • Canran uchel o blant yn mynychu ysgolion all-dalgylch

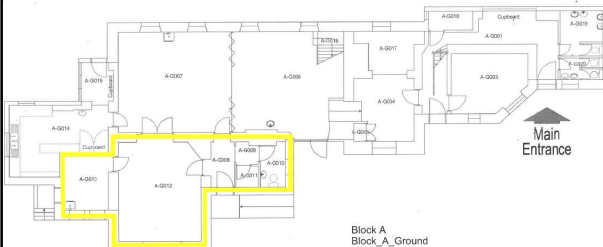
Parch • Gwasanaethu • Positif • Gweithio fel tîm • Gwerth am arian
Respect • Serving • Positive • Working as a team • Value for money



2. Newid strwythur staffio

2. Cryfderau / Strengths	2. Gwendidau / Weaknesses
<ul style="list-style-type: none"> • Cadw ysgol yn Llanaelhaearn • Addysg cyfrwng Cymraeg i ddysgwyr • Ysgol o fewn pellder rhesymol i gartref dysgwyr y dalgylch • Ansawdd yr addysg a buddiannau'r ysgol • Dosbarthiadau bychain 	<ul style="list-style-type: none"> • Dosbarthiadau bychain • Niferoedd isel • Cost y disgybl uchel
2. Cyfleon / Opportunities	2. Bygythiadau / Threats
<ul style="list-style-type: none"> • Lleihau costau staff 	<ul style="list-style-type: none"> • Rhagamcanion niferoedd • Risg o beidio penodi Pennaeth a cholli staff yn y cyfamser. • Rhaid cael Pennaeth ar ysgol iddo agor. • Llefydd gweigion • Costau cynnal a chadw yr adeilad • Yr ysgol yn ddibynnol ar gyllid y 'rhwyl diogelu' • Canran uchel o blant yn mynychu ysgolion all-dalgylch

3. Uned Arsyliw Blynnyddoedd Cynnar (ABC)



Parch • Gwasanaethu • Positif • Gweithio fel tîm • Gwerth am arian
Respect • Serving • Positive • Working as a team • Value for money



3. Uned ABC

3. Cryfderau / Strengths	3. Gwendidau / Weaknesses
<ul style="list-style-type: none"> • Cadw ysgol yn Llanaelhaearn • Addysg cyfrwng Cymraeg i ddysgwyr • Ysgol o fewn pellder rhesymol i gartref dysgwyr y dalgylch • Ansawdd yr addysg a buddiannau'r ysgol • Dosbarthiadau bychain 	<ul style="list-style-type: none"> • Uned ABC yn arferol ddim yn denu disgyblion i'r ysgol. • Ni fyddai'n creu incwm • Dosbarthiadau bychain • Niferoedd isel • Cost y disgybl uchel
3. Cyfleon / Opportunities	3. Bygythiadau / Threats
<ul style="list-style-type: none"> • Mwy o ddefnydd o'r adeilad 	<ul style="list-style-type: none"> • Aberthu gofod dysgu • Diffyg yn y gyllideb • Rhagamcanion niferoedd • Llefydd gweigion • Costau cynnal a chadw yr adeilad • Dim ond 4 diwrnod di-gyswilt i'r Pennaeth (tair ysgol) • Canran uchel o blant yn mynychu ysgolion all-dalgylch

Respect • Serving • Positive • Working as a team • Value for money

4. Ffederaleiddio ffurfiol

4. Cryfderau / Strengths	4. Gwendidau / Weaknesses
<ul style="list-style-type: none"> Ffurfioli y trefniant o gydweithio Cadw ysgol yn Llanaelhaearn Addysg cyfrwng Cymraeg i ddysgwyr Ysgol o fewn pellter rhesymol i gartref dysgwyr y dalgylch Model ffurfiol yn rhoi strwythur pendant ac busasai rhaid i unrhyw Bennaeth newydd gytuno â hyn. Ansawdd yr addysg a buddiannau'r ysgol Dosbarthiadau bychain 	<ul style="list-style-type: none"> Pellter daearyddol Niferoedd ddim yn ddigon i ganiatáu amser digyswilt i'r Pennaeth Dosbarthiadau bychain Cost y disgybl uchel Niferoedd isel
4. Cyfleon / Opportunities	4. Bygythiadau / Threats
<ul style="list-style-type: none"> Arbed amser y Pennaeth Un Corff Llywodraethol ar y tair ysgol Rhannu adnoddau 	<ul style="list-style-type: none"> Posiblirwydd o diffyg yn y gyllideb Costau cynnal a chadw yr adeilad Llefydd gweigion Rhagamcanion niferoedd Canran uchel o blant yn mynychu ysgolion all-dalgylch Diffyg diddordeb gan yr ysgolion cyfagos.

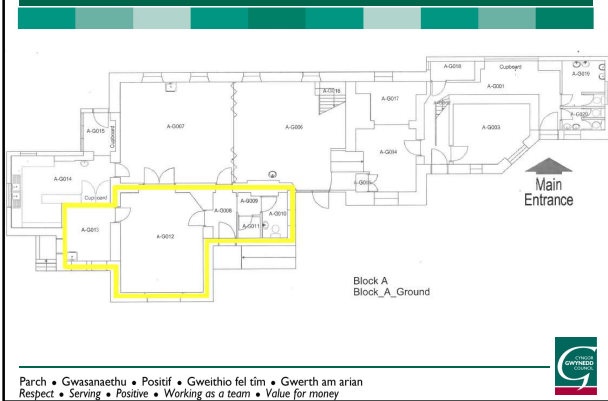
Respect • Serving • Positive • Working as a team • Value for money

5. Gwarant o 5 mlynedd

5. Cryfderau / Strengths	5. Gwendidau / Weaknesses
<ul style="list-style-type: none"> Cadw ysgol yn Llanaelhaearn am o leiaf 5 mlynedd Addysg cyfrwng Cymraeg i ddysgwyr Ysgol o fewn pellter rhesymol i gartref dysgwyr y dalgylch Effaith ar y gymuned Ansawdd yr addysg a buddiannau'r ysgol Dosbarthiadau bychain 	<ul style="list-style-type: none"> Dosbarthiadau bychain Niferoedd isel Cost y disgybl yn uchel
5. Cyfleon / Opportunities	5. Bygythiadau / Threats
<ul style="list-style-type: none"> Cyfle i'r ysgol ymgyrchu i godi niferoedd 	<ul style="list-style-type: none"> Rhagamcanion niferoedd Diffyg yn y gyllideb Llefydd gweigion Costau cynnal a chadw yr adeilad Dim ond 4 diwrnod di-gyswilt i'r Pennaeth (tair ysgol) Canran uchel o blant yn mynychu ysgolion all-dalgylch Dim sicrwydd y bydd niferoedd yn codi yn y cyfnod yma Anhebygol i blant symud yn ôl i'r ysgol o'r ysgolion dalgylchol

Respect • Serving • Positive • Working as a team • Value for money

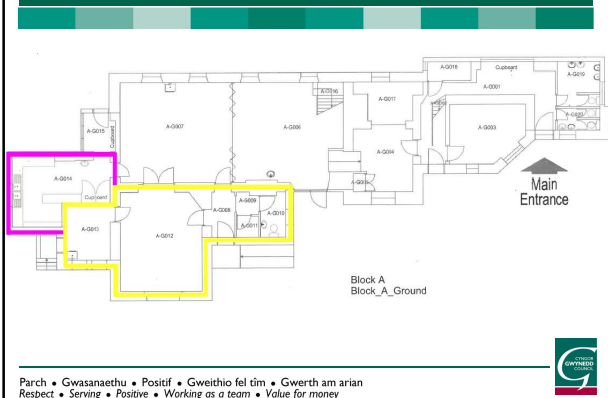
6. Sefydlu clwb gofal plant



6. Sefydlu clwb gofal plant

6. Cryfderau / Strengths	6. Gwendidau / Weaknesses
<ul style="list-style-type: none"> Cadw ysgol yn Llanaelhaearn Addysg cyfrwng Cymraeg i ddysgwyr Ysgol o fewn pellter rhesymol i gartref dysgwyr y dalgylch Ansawdd yr addysg a buddiannau'r ysgol Dosbarthiadau bychain 	<ul style="list-style-type: none"> Angen cofrestru gyda AGC Dosbarthiadau bychain Cost y disgybl yn uchel Niferoedd isel
6. Cyfleon / Opportunities	6. Bygythiadau / Threats
<ul style="list-style-type: none"> Gall ddenu plant i'r ysgol 	<ul style="list-style-type: none"> Peidio gallu dod o hyd i ddarparwr cymwys a chofrestredig Angen isafswm o 10 o blant yn rheolaidd Angen codi ffi o £8.50-£13 am glwb ar ôl ysgol Rhagamcanion niferoedd Diffyg yn y gyllideb Llefydd gweigion Costau cynnal a chadw yr adeilad Dim ond 4 diwrnod di-gyswilt i'r Pennaeth (tair ysgol) Canran uchel o blant yn mynychu ysgolion all-dalgylch

7. Caffi cymunedol



7. Caffi cymunedol

7. Cryfderau / Strengths	7. Gwendidau / Weaknesses
<ul style="list-style-type: none"> Cadw ysgol yn Llanaelhaearn Hybu defnydd cymunedol o'r adeilad Addysg cyfrwng Cymraeg i ddysgwyr Ysgol o fewn pellter rhesymol i gartref dysgwyr y dalgylch Ansawdd yr addysg a buddiannau'r ysgol Dosbarthiadau bychain 	<ul style="list-style-type: none"> Byddai angen cyfyngu amseroedd tu allan i oriau ysgol Dosbarthiadau bychain Cost y disgybl uchel Niferoedd isel
7. Cyfleon / Opportunities	7. Bygythiadau / Threats
<ul style="list-style-type: none"> Codi profiil yr ysgol drwy fod yn hwb cymunedol Potensial i gael incwm ychwanegol 	<ul style="list-style-type: none"> Angen buddsoddi yn y gegin (£45,000) Diffyg yn y gyllideb Llefydd gweigion Costau cynnal a chadw yr adeilad Dim ond 4 diwrnod di-gyswilt i'r Pennaeth (tair ysgol) Canran uchel o blant yn mynychu ysgolion all-dalgylch Risg gwirioneddol ynglŷn â faint fysa'n defnyddio'r caffi Risgiau DBS / Iechyd a diogelwch wrth gymysgu plant â'r cyhoedd

8. Cau Ysgol Llanaelhaearn, addysgu'r disgyblion mewn ysgol amgen

8. Cryfderau / Strengths	8. Gwendidau / Weaknesses
<ul style="list-style-type: none"> Disgyblion i gael eu haddysgu mewn dosbarthiadau o faint mwy addas Addysg cyfrwng Cymraeg i ddisgwyr Ysgol o fewn pellter rhesymol i gartref dysgwyr y dalgylch Lleihau cost y disgybl o addysgu 	<ul style="list-style-type: none"> Pentref Llanaelhaearn yn colli Ysgol Pellter teithio pellach o gartref dysgwyr
8. Cyfleon / Opportunities	8. Byggythiadau / Threats
<ul style="list-style-type: none"> Cyfle i ddisgyblion gymysgu yn ddyddiol gydag eraill o'r un oedran Lleihad sylweddol yn y cyfradd o lefydd gweigion 	<ul style="list-style-type: none"> Diswyddo staff

Parch • Gwasanaethu • Positif • Gweithio fel tîm • Gwerth am arian
Respect • Serving • Positive • Working as a team • Value for money



Rhestr hir o opsiynau

OPSIYNAU

1. Parhau gyda'r sefyllfa bresennol (Y 'Status Quo')
2. Newid Strwythur Staffio
3. Uned Arsylwi Blynyddoedd Cynnar
4. Ffederaleiddio
5. Gwarant y bydd yr ysgol ar agor am o leiaf 5 mlynedd
6. Clwb gofal plant
7. Caffi Cymunedol
8. Cau Ysgol Llanaelhaearn a'r disgyblion i'w haddysgu mewn ysgol amgen

Parch • Gwasanaethu • Positif • Gweithio fel tîm • Gwerth am arian
Respect • Serving • Positive • Working as a team • Value for money



Camau nesaf / Next steps

- **Medi 2019** - Cyfarfod i drafod canlyniadau asesu'r opsiynau
- **Medi 2019** - Cyfarfod pellach i gytuno ar rhestr fer o opsiynau
- **Tachwedd 2019** – Wedi ystyried y rhestr fer o opsiynau, Aelod Cabinet i gyflwyno argymhelliad i Gabinet Cyngor Gwynedd.

Parch • Gwasanaethu • Positif • Gweithio fel tîm • Gwerth am arian
Respect • Serving • Positive • Working as a team • Value for money



ModerneiddioAddysg@gwynedd.llyw.cymru

Parch • Gwasanaethu • Positif • Gweithio fel tîm • Gwerth am arian
Respect • Serving • Positive • Working as a team • Value for money



Ysgol Llanaelhaearn



Parch • Gwasanaethu • Positif • Gweithio fel tîm • Gwerth am arian
Respect • Serving • Positive • Working as a team • Value for money

www.gwynedd.llyw.cymru



Agenda

- Respond to ideas presented at the last meeting
- Review the long list of options
- Next steps

Parch • Gwasanaethu • Positif • Gweithio fel tîm • Gwerth am arian
Respect • Serving • Positive • Working as a team • Value for money



Assessment of Possible Options

Gwern ap Rhisiart
Area Education Officer

Parch • Gwasanaethu • Positif • Gweithio fel tîm • Gwerth am arian
Respect • Serving • Positive • Working as a team • Value for money



Responding to Proposals

	Comments	Considerations / Gwynedd Council response
1	Can the Education Department try to campaign to increase school numbers?	In accordance with the School Admissions Code (005/2013): <i>LAs must not suggest that parents should express a preference for the school in whose catchment area they live, or that they have been allocated a place at that school before they have expressed a preference</i> . The authority has no right to seek to influence parental choice
2	Is it possible for Gwynedd Council to influence who moves to the village?	A Common Housing Allocation Policy has been set up jointly by Gwynedd Council, Cartrefi Cymunedol Gwynedd, Grŵp Cynefin and North Wales Housing. A housing allocation criteria can be seen in the policy. Tenants will be offered houses of a size suitable for their circumstances (eg typically three-bedroom houses for families with two or three children). A person who is offered a house in the village of Llanaelhaearn is therefore dependent on the policy and also on the housing stock in the area and what becomes vacant to let.

Parch • Gwasanaethu • Positif • Gweithio fel tîm • Gwerth am arian
Respect • Serving • Positive • Working as a team • Value for money



Responding to Proposals

	Comments	Consideration / Gwynedd Council response
3	Can parents be provided with information that would confirm that the school is not closing at the end of the Summer term 2019.	It would not be appropriate for the Education Department to do this, it may seem like a tactic to try to influence parental choice. However, parents may be contacted by the school / Governing Body.
4	Could Gwynedd Council send out a letter to parents who have pupils attending schools outside the catchment area.	The Council is unable to do this as it will be in breach of school admissions law.

Parch • Gwasanaethu • Positif • Gweithio fel tîm • Gwerth am arian
Respect • Serving • Positive • Working as a team • Value for money



Possible Options

Parch • Gwasanaethu • Positif • Gweithio fel tîm • Gwerth am arian
Respect • Serving • Positive • Working as a team • Value for money



Long List of Options

OPTIONS	
1.	Continue with the 'status quo'
2.	Change Staff Structure
3.	Early Years Assessment Centres (ABC)
4.	Federisation
5.	Guarantee that the school will be open for at least 5 years
6.	Childcare Club
7.	Community Café
8.	Close Ysgol Llanaelhaearn and pupils to be educated at an alternative school

Parch • Gwasanaethu • Positif • Gweithio fel tîm • Gwerth am arian
Respect • Serving • Positive • Working as a team • Value for money



Options

- We have researched these 8 options.
- Each option has been analysed by means of a 'SWOT analysis'
- We are eager to receive your input to further develop these assessments

Parch • Gwasanaethu • Positif • Gweithio fel tîm • Gwerth am arian
Respect • Serving • Positive • Working as a team • Value for money



1. Continue with the 'status quo'

1. Strengths	1. Weaknesses
<ul style="list-style-type: none"> • Keep a school presence in Llanaelhaearn • Welsh-medium education for learners • School within a reasonable distance of the catchment area learners' homes • The quality of education and benefits of the school • Small classes 	<ul style="list-style-type: none"> • Small classes • Low numbers • High cost per pupil
1. Opportunities	1. Threats
	<ul style="list-style-type: none"> • Projections of numbers • Budget deficit • Surplus places • Maintenance costs - £ 100k not a big threat • Only 4 non-contact days for the Headteacher (three schools) • High percentage of children attending schools outside the catchment area

Parch • Gwasanaethu • Positif • Gweithio fel tîm • Gwerth am arian
Respect • Serving • Positive • Working as a team • Value for money

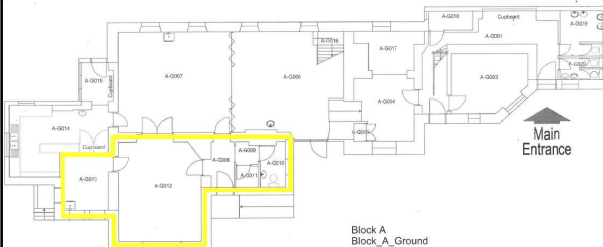


2. Change Staff Structure

2. Strengths	2. Weaknesses
<ul style="list-style-type: none"> • Keep a school presence in Llanaelhaearn • Welsh-medium education for learners • School within a reasonable distance of the catchment area learners' homes • The quality of education and benefits of the school • Small classes 	<ul style="list-style-type: none"> • Small classes • Low numbers • High cost per pupil
2. Opportunities	2. Threats
<ul style="list-style-type: none"> • Reduce staff costs 	<ul style="list-style-type: none"> • Projections of numbers • Risk of not appointing a Headteacher and losing staff in the meantime. • Must have a Headteacher for a school to open • Surplus places • Maintenance costs • School relies on 'Minimum Staffing Protection' funding • High percentage of children attending schools outside the catchment area

Respect • Serving • Positive • Working as a team • Value for money

3. Early Years Assessment Centre (ABC)



Parch • Gwasanaethu • Positif • Gweithio fel tîm • Gwerth am arian
Respect • Serving • Positive • Working as a team • Value for money



3. Early Years Assessment Centre (ABC)

3. Strengths	3. Weaknesses
<ul style="list-style-type: none"> • Keep a school presence in Llanaelhaearn • Welsh-medium education for learners • School within a reasonable distance of the catchment area learners' homes • The quality of education and benefits of the school • Small classes 	<ul style="list-style-type: none"> • Early Years Assessment Centre does not usually attract pupils to school. • It would not generate an income • Small classes • Low numbers • High cost per pupil
3. Opportunities	3. Threats
<ul style="list-style-type: none"> • Increased use of building 	<ul style="list-style-type: none"> • Sacrifice learning space • Budget deficit • Projections of numbers • Surplus places • Maintenance costs • Only 4 non-contact days for the Headteacher (three schools) • High percentage of children attending schools outside the catchment area

4. Federisation	
4. Strengths	4. Weaknesses
<ul style="list-style-type: none"> Formalise the current collaboration arrangement Keep a school presence in Llanaelhaearn Welsh-medium education for learners School within a reasonable distance of the catchment area learners' homes A formal model with a definite structure and any new Headteacher would have to agree to this. The quality of education and benefits of the school Small classes 	<ul style="list-style-type: none"> Geographical distance between schools Numbers not enough to allow non-contact time for Headteacher Small classes High cost per pupil Low numbers
4. Opportunities	4. Threats
<ul style="list-style-type: none"> Release Headteacher's time One Governing Body for the three schools To share resources 	<ul style="list-style-type: none"> Possibility of budget deficit Maintenance costs Surplus places Projections of numbers High percentage of children attending schools outside the catchment area Lack of interest from neighboring schools.

5. 5 Years Guarantee	
5. Strengths	5. Weaknesses
<ul style="list-style-type: none"> Keep a school in Llanaelhaearn for at least 5 years Welsh-medium education for learners School within a reasonable distance of the catchment area learners' homes Impact on the community The quality of education and benefits of the school Small classes 	<ul style="list-style-type: none"> Small classes Low numbers High cost per pupil
5. Opportunities	5. Threats
<ul style="list-style-type: none"> Opportunity for the school to campaign to increase numbers 	<ul style="list-style-type: none"> Projections of numbers Budget deficit Surplus places Maintenance costs Only 4 non-contact days for the Headteacher (three schools) High percentage of children attending schools outside the catchment area No guarantee that numbers will rise in this period Unlikely that children will move back to the school from catchment area schools

6. Establish a Childcare Club

Block A
Block_A_Ground

Main Entrance

Parch • Gwasanaethu • Positif • Gweithio fel tîm • Gwerth am arian
Respect • Serving • Positive • Working as a team • Value for money

6. Establish a Childcare Club	
6. Strengths	6. Weaknesses
<ul style="list-style-type: none"> Keep a school presence in Llanaelhaearn Welsh-medium education for learners School within a reasonable distance of the catchment area learners' homes The quality of education and benefits of the school Small classes 	<ul style="list-style-type: none"> Need to register with Care Inspectorate Wales Small classes High cost per pupil Low numbers
6. Opportunities	6. Threats
<ul style="list-style-type: none"> It can attract children to the school 	<ul style="list-style-type: none"> Not being able to find a qualified and registered provider Minimum of 10 children required on a regular basis Need to charge a fee of £ 8.50- £ 13 for an after school club Projections of numbers Budget deficit Surplus places Maintenance costs Only 4 non-contact days for the Headteacher (three schools) High percentage of children attending schools outside the catchment area

7. Community Cafe

Block A
Block_A_Ground

Main Entrance

Parch • Gwasanaethu • Positif • Gweithio fel tîm • Gwerth am arian
Respect • Serving • Positive • Working as a team • Value for money

7. Community Cafe	
7. Strengths	7. Weaknesses
<ul style="list-style-type: none"> Keep a school presence in Llanaelhaearn Promote community use of the building Welsh-medium education for learners School within a reasonable distance of the catchment area learners' homes The quality of education and benefits of the school Small classes 	<ul style="list-style-type: none"> Restricted to operate outside of school hours Small classes High cost per pupil Low numbers
7. Opportunities	7. Threats
<ul style="list-style-type: none"> Raise the profile of the school by being a community hub Potential for additional income 	<ul style="list-style-type: none"> Need to invest in the kitchen (£45,000). Projections of numbers Budget deficit Surplus places Building maintenance costs Only 4 non-contact days for the Headteacher (three schools) High percentage of children attending schools outside the catchment area Risk regarding the use of the café (lack of interest) DBS / health and safety risks if the children would be working with the public

8. Close Ysgol Llanaelhaearn and pupils to be educated at an alternative school

8. Strengths	8. Weaknesses
<ul style="list-style-type: none"> Learners to be educated in classes of more appropriate sizes Welsh-medium education for learners School within a reasonable distance of the catchment area learners' homes Reduce the cost per pupil of teaching 	<ul style="list-style-type: none"> Loss of a school in the village of Llanaelhaearn Further distance to travel from learners' home
8. Opportunities	8. Threats
<ul style="list-style-type: none"> An opportunity for pupils to mix daily with others of the same age Significant reduction in surplus places 	<ul style="list-style-type: none"> Staff redundancy

Parch • Gwasanaethu • Positif • Gweithio fel tîm • Gwerth am arian
Respect • Serving • Positive • Working as a team • Value for money

Long List of Options

OPTIONS	
1.	Continue with the 'status quo'
2.	Change Staffing Structure
3.	Early Years Assessment Centre (ABC)
4.	Federalisation
5.	Guarantee that the school will be open for at least 5 years
6.	Childcare Club
7.	Community Café
8.	Close Ysgol Llanaelhaearn and pupils to be educated at an alternative school

Parch • Gwasanaethu • Positif • Gweithio fel tîm • Gwerth am arian
Respect • Serving • Positive • Working as a team • Value for money

Next Steps

- September 2019** - Meeting to discuss the results of the options assessment
- September 2019** - Further meeting to agree on a short list of options
- November 2019** – Having considered the short list of options, Cabinet Member to present his recommendation to Gwynedd Council's Cabinet.

Parch • Gwasanaethu • Positif • Gweithio fel tîm • Gwerth am arian
Respect • Serving • Positive • Working as a team • Value for money

ModernisingEducation@gwynedd.gov.uk

Parch • Gwasanaethu • Positif • Gweithio fel tîm • Gwerth am arian
Respect • Serving • Positive • Working as a team • Value for money

Cyfarfod o: Adolygu Ysgol Llanaelhaearn	Dyddiad: 09/09/2019 7:30yh Lleoliad: Canolfan y Babel, Llanaelhaearn
--	---

Presennol:	<u>Swyddogion:</u> Gwern ap Rhisiart (GapRh); Garem Jackson (GJ); Cyng. Cemlyn Williams (CW); Ffion Jones (FfJ); Rhian Hughes (RH);
	<u>Ar ran Llywodraethwyr Ysgol Llanaelhaearn:</u> 10 Aelod
	<u>Rhieni/Teulu</u> 4 Aelod

Rhif Eitem	Eitem / Pwnc	Gweithrediad
1.	CROESO	<ul style="list-style-type: none"> • Croesawyd pawb i'r ail gyfarfod gan Garem Jackson, Pennaeth Addysg Gwynedd. • Diolchwyd am y diddordeb sydd wedi cael ei ddangos gan yr ysgol a'r gymuned yn ystod y broses. • Eglurwyd mai pwrpas y cyfarfod oedd mynd drwy'r opsiynau sydd wedi cael eu cynnig.
2.	GEIRIAU AGORIADOL YR AELOD CABINET DROS ADDYSG	<ul style="list-style-type: none"> • Ategu geiriau'r Pennaeth Addysg gan egluro mai bwriad y cyfarfod yw manylu ar yr opsiynau gan edrych ar y cryfderau, gwendidau, cyfleon a bygythiadau ar gyfer yr 8 opsiwn. • Nododd yr Aelod Cabinet ei bod hi'n hanfodol ein bod yn derbyn mewnbwn budd-ddeiliaid Ysgol Llanaelhaearn fel rhan o'r broses.
3.	CYFLWYNIAD - OPSIYNAU POSIBL	<ul style="list-style-type: none"> • Pwysleisiwyd pwysigrwydd cyfraniad budd-ddeiliaid Ysgol Llanaelhaearn wrth drafod yr opsiynau. • Nodwyd bod modd ymhelaethu ar yr opsiynau. Roedd derbyn barn a mewnbwn y budd-ddeiliaid yn hanfodol. • Aethpwyd drwy'r cyflwyniad oedd yn crynhoi'r 'SWOT Analysis' ar gyfer pob un o'r 8 opsiwn. • Rhannwyd templedi 'SWOT Analysis' fel bod cyfle i'r unigolion gyfrannu un ai ar bapur neu ar lafar yn ystod y cyfarfod. Nodwyd hefyd bod cyfle iddynt fynegi eu barn / sylwadau trwy e-bost (erbyn Dydd Iau, Medi 12). <p>Opsiwn 1 – Parhau gyda'r sefyllfa bresennol:</p> <ul style="list-style-type: none"> • Eglurwyd bod addysg cyfrwng Cymraeg yn cael ei gynnwys yn y 'SWOT Analysis' gan fod yr Iaith Gymraeg yn ystyriaeth wrth asesu'r opsiynau. • Eglurwyd yn ogystal bod Rhwyd Gwarchodaeth yn cyfrannu swm sylweddol at gyllideb yr ysgol bob blwyddyn. • Aethpwyd ymlaen i esbonio os y bydd diffyg yn y gyllideb drwy barhau gyda'r model presennol ac y byddai angen i'r ysgol ail-osod y gyllideb i gwrdd a'r diffyg. • Nodwyd bod angen buddsoddi £55,000 yn yr adeilad a £45,000 yn y gegin, pe byddai bwriad i ddefnyddio y gegin eto. Eglurwyd bod cyllid Cynnal a Chadw ar wahân i gyllid Addysg ac nid oes modd tynnu £100,000 o gyllideb yr ysgol. • Nodwyd bod angen ychwanegu at y cryfderau gan gynnwys ansawdd yr addysg a

buddiannau'r ysgol.

- Mynegwyd bod modd dadlau y gall dosbarthiadau bychain fod yn gryfder yn ogystal â gwendid.
- Gofynnwyd a oes angen i'r gwaith Cynnal a Chadw cael ei gomisiynu gan y Cyngor, ac a fyddai modd i'r ysgol drefnu i gontractwyr lleol wneud y gwaith. Eglurwyd fod angen i unrhyw gontractwr fod yn gofrestrdig gyda CHAS er mwyn rheoli risgiau iechyd a diogelwch.
- Nodwyd nad yw £100,000 yn swm aruthrol ac felly dim yn fygythiad mawr i'r opsiwn.

Opsiwn 2 – Newid Strwythur Staffio:

- Mae'r Rhwyd Gwarchodaeth yn gyfraniad ychwanegol sydd yn caniatáu i ysgol gyflogi 1.5 athro.
- Nodwyd bod model presennol Ysgol Llanaelhaearn yn gostus o safbwynt cyflogi athro, Cymhorthydd ac 1 diwrnod o amser Pennaeth Ysgol Garndolbenmaen.
- Nodwyd bod yr ysgol wedi cael anhawster i benodi Pennaeth yn y gorffennol, sydd yn wendid i'r model.

Opsiwn 3 – Uned Arsylwi Blynyddoedd Cynnar (ABC):

- Cadarnhawyd bod lleoliad bosibl wedi cael ei adnabod ar gyfer yr Uned ABC.
- Nodwyd nad yw'r math yma o uned yn dueddol o ddenu mwy o blant i'r ysgolion.
- Aethpwyd ymlaen i drafod nad oes galw am unedau ymddygiad yn yr ardal gan fod Uned Ymddygiad wedi agor ym Mhenygroes ers mis Medi diwethaf.
- 2 eithriad am leoliadau ar dir ysgol am incwm sef Ysgol y Moelwyn (tŷ ar yr iard) Ysgol Dyffryn Nantlle (Clwb Ieuenctid).

Opsiwn 4 – Ffederaleiddio Ffurfiol

- Eglurwyd mai trefniant ffederaleiddio anffurfiol ('meddal') sydd rhwng Ysgol Llanaelhaearn ac Ysgol Garndolbenmaen.
- Nid yw'n broses ffederaleiddio 'naturiol' o ran y ffordd mae'r dalgylch yn gorwedd gan fod Ysgol Llanybi yn y canol rhwng yr ysgolion.
- Eglurwyd byddai ffederaleiddio ffurfiol ('caled') yn golygu fod cyllidebau yr ysgolion yn parhau ar wahân, a byddai'r cyrff llywodraethu yn cael eu diddymu gan benodi un corff llywodraethu ar gyfer y ffederasiwn.
- Ni fyddai ffurfioli'r model presennol rhwng yr ysgolion yn caniatáu digon o amser i ryddhau amser digyswllt i'r Pennaeth.
- Aethpwyd ymlaen i egluro bod model ffederal tebyg wedi ei sefydlu rhwng Ysgol Corris ac Ysgol Pennal (un corff llywodraethol ffurfiol). Yn ogystal mae ymgynghoriad wedi bod yn ddiweddar ynglŷn â threfniant ffederaleiddio ffurfiol rhwng Ysgol Talysarn ac Ysgol Brynaerau.
- Nodwyd mai bygythiad amlwg sydd heb ei gynnwys yn y tabl yw diffyg diddordeb gan yr ysgolion cyfagos i ffederaleiddio yn ffurfiol.
- Eglurwyd bod angen edrych ar yr opsiwn yn fwy manwl gan ystyried yr holl ysgolion cyfagos ac nid Ysgol Chwilog ac Ysgol Garndolbenmaen yn unig.
- Nodwyd bydd y Swyddog Addysg Ardal yn cysylltu gyda'r ysgolion. Pwysleisiwyd nad oes angen i fudd-ddeiliad Ysgol Llanaelhaearn gysylltu gydag ysgolion cyfagos i drafod y mater.
- Nodwyd byddai proses ffederaleiddio yn cymryd tua 9 mis (proses statudol ac ymgynghori).
- Gofynnwyd beth oedd yr amserlen i gael adborth gan yr ysgolion cyfagos ynglŷn â'u diddordeb i ffederaleiddio. Eglurwyd mai y bwriad yw drafftio modelau ffederaleiddio posib yn ystod yr wythnosau nesaf.

- Pwysleisiwyd pwysigrwydd sicrhau cydbwysedd cywir i'r Pennaeth. Eglurwyd bod tair ysgol yn gallu bod yn sialens o ran yr hyn sydd yn ymarferol.
- Nodwyd os byddai newid o ran Pennaeth yn ystod y tymor byr ni fyddai rhaid i'r Pennaeth newydd gytuno i barhau a'r trefniant anffurfiol sydd rhwng Ysgol Garndolbenmaen ac Ysgol Llanaelhaearn.
- Eglurwyd byddai model ffurfiol yn rhoi strwythur pendant a buasai rhaid i unrhyw Bennaeth newydd gytuno â hyn.
- Nodwyd yn ddaearyddol, nad yw Ysgol Garndolbenmaen yr opsiwn gorau.
- Dywedodd sawl unigolyn mai opsiwn 4 byddai'r datrysiaid gorau.

Opsiwn 5 – Gwarant o 5 mlynedd:

- Nodwyd nad yw'r Adran Addysg wedi rhoi gwarant o'r fath i ysgolion yn y gorffennol.
- Nodwyd mai ond blwyddyn o warant ar y tro gall y Cyngor gynnig o ganlyniad i'r modd mae'r awdurdod yn derbyn eu dyraniad gan y Llywodraeth.
- Mynegwyd mwy na thebyg byddai'n anodd iawn denu plant sydd eisoes wedi gadael dalgylch Llanaelhaearn i fynd i ysgol arall, i fynychu Ysgol Llanaelhaearn gyda'r warant o 5 mlynedd. Byddai gwarant mwy na thebyg yn denu plant newydd sydd yn y dalgylch i'r ysgol yn unig.

Opsiwn 6 – Sefydlu Clwb Gofal Plant:

- Clwb Gofal Plant yn boblogaidd mewn sawl ardal, ond gall darganfod darparwyr cymwys fod yn heriol.
- Amcan-ffi am ofal plant ychydig yn ddrud o'i gymharu ag ardaloedd eraill, ond mae hyn yn ddibynnol o bosibl ar nifer o blant fydd yn mynychu (rhatach os oes mwy o blant).
- Codwyd y cwestiwn os oes modd uno opsiwn 5 a 6.

Opsiwn 7 – Caffi Cymunedol:

- Byddai angen o leiaf £45,000 i adnewyddu'r gegin a mwy na thebyg ni fyddai Gwasanaeth Cynnal a Chadw yn blaenoriaethu hyn. Bygythiad amlwg.
- Hafod Lon yw'r unig enghraifft gan Gyngor Gwynedd o gaffi cymunedol ar safle ysgol.
- Nodwyd risgiau DBS / iechyd a diogelwch gyda chymysgu disgyblion â'r cyhoedd.
- Byddai hefyd risg ynglŷn â faint a fyddai'n defnyddio caffi yn Llanaelhaearn.

Opsiwn 8 – Cau Ysgol Llanaelhaearn, addysgu'r disgyblion mewn ysgol amgen:

- Gofynnwyd beth oedd bwriad y Cyngor gyda'r safle os byddai Ysgol Llanaelhaearn yn cau.
- Eglurwyd bod rhaid dilyn Cynllun Gwaredu. Byddai'r gymuned yn cael y cynnig cyntaf yn unol â pholisi ôl-ddefnydd yr Awdurdod.
- Gofynnwyd pa ysgol byddai'r disgyblion yn mynychu ac eglurwyd nad yw hynny wedi ei drafod hyd yma, ond mai Ysgol Bro Plenydd yw'r ysgol agosaf a fyddai'n gallu ymdopi gyda niferoedd ychwanegol.
- Gofynnwyd a oes modd i ysgol wrthod y plant. Eglurwyd nad oes modd i ysgol wrthod disgyblion os yn ysgol dalgylchol i Llanaelhaearn.
- Codwyd y cwestiwn, pam felly bod modd i'r ysgol wrthod y broses i ffederaleiddio yn ffurfiol. Nodwyd bod yn broses fwy cymhleth ac yn fater i'r cyrff llywodraethol.
- Nodwyd byddai system cludiant ar gael i'r disgyblion er mwyn cyrraedd yr ysgol amgen yn unol â pholisi cludiant yr Awdurdod.
- Nodwyd bod rhaid ystyried y ffaith y gall rhieni ddewis gyrru eu plant i unrhyw ysgol.

4.	CAMAU NESAF	<ul style="list-style-type: none"> • Nodwyd mai bwriad y cyfarfod nesaf fydd i gyflwyno'r rhestr fer (3 neu 4 opsiwn fydd yn cael eu hymchwilio a'u hasesu ymhellach) • Codwyd y cwestiwn os oes bwriad i drafod y broses gyda'r disgyblion. Nododd y Swyddog Ardal ei fod yn hapus mynd draw i'r ysgol ond nad yw'n gynamserol i drafod ar hyn o bryd. Byddai'n fwy addas i'r Pennaeth drafod yn uniongyrchol efo'r disgyblion unwaith bydd penderfyniad ffurfiol wedi ei wneud. • Bydd Swyddog Addysg Ardal yn trafod argymhelliad yr Aelod Cabinet gyda'r Corff Llywodraethol ym mis Tachwedd. • Pryderodd rhai oedd yn bresennol bod y penderfyniad wedi ei wneud yn barod gan fod mwy o wybodaeth wedi cael ei gynnwys gyda 'Opsiwn 8'. • Pwysleiswyd bod canllawiau pendant yn cael eu dilyn wrth ystyried 'SWOT Analysis' a nodwyd nad oedd penderfyniad wedi cael ei wneud yn fewnol ar y broses. • Mynegodd un aelod bod angen ychwanegu'r rheswm y credai fod y niferoedd wedi lleihau yn 'Opsiwn 5'. Eglurwyd bod modd i'r unigolyn wneud cwyn swyddogol ar y mater dan sylw gan nodi nad yw ceisio cyfiawnhau rhesymau dros y sefyllfa bresennol yn ran o'r ymarferiad 'SWOT Analysis' ar gyfer yr opsiynau. • Eglurwyd bod y rhestr fer yn cael ei phenderfynu drwy adolygu'r holl opsiynau a sylwadau rydym wedi eu derbyn gan ddilyn meini prawf yn unol ac amcanion yr Adran Addysg. • Gweithred: Budd-ddeiliaid Ysgol Llanaelhaearn i rannu sylwadau pellach dros e-bost erbyn Dydd Iau*. Bydd copi electronig o'r cyflwyniad yn cael ei rannu.
5.	CLOI	<ul style="list-style-type: none"> • Diolchwyd i bawb am fynychu'r cyfarfod a bydd y cyfarfod nesaf yn cael ei gynnal mewn pythefnos (23 Medi)*.

***Ers y cyfarfod, gwnaethpwyd y penderfyniad i ganiatáu mwy o amser i gyflwyno ymatebion a sylwadau pellach, sef erbyn dydd Llun 16eg Medi 2019, ac fe fydd y cyfarfod nesaf yn cael ei gynnal nos Lun y 30ain Medi 2019 am 7.30yh yng Nghanolfan y Babell, Llanaelhaearn.**

Ysgol Llanaelhaearn Review Meeting

Addysg

Meeting:	Ysgol Llanaelhaearn Review Meeting	Date: 09/09/2019 7:30pm	Location: Canolfan y Babell, Llanaelhaearn
-----------------	------------------------------------	--------------------------------	---

Present:	<p><u>Officers:</u> Gwern ap Rhisiart (GapRh); Garem Jackson (GJ); Cllr. Cemlyn Williams (CW); Ffion Jones (FfJ); Rhian Hughes (RH);</p> <p><u>On behalf of Ysgol Llanaelhaearn Governors:</u> 10 Member</p> <p><u>Guardian / Family</u> 4 Member</p>
-----------------	---

Item No.	Item / Subject	Actions
1.	WELCOME	<ul style="list-style-type: none"> Garem Jackson, Head of Education Gwynedd Council welcomed everyone to the second meeting. The interest shown by the school and the community during the process was praised. It was explained that the purpose of the meeting was to go through the options that had been proposed.
2.	CABINET MEMBER FOR EDUCATION OPENING WORDS	<ul style="list-style-type: none"> The words of the Head of Education were reiterated and explained that the purpose of the meeting was to look at the options in more detail and assess the strengths, weaknesses, opportunities and threats for the 8 options. The Cabinet Member noted that it was essential that we received the input of Ysgol Llanaelhaearn's stakeholders as part of the process.
3.	INTRODUCTION - POSSIBLE OPTIONS	<ul style="list-style-type: none"> The importance of Ysgol Llanaelhaearn's stakeholder contribution was emphasised when discussing the options. It was noted that it is possible to elaborate on the options. Accepting the views and input of stakeholders was essential. The Area Education Officer went through the presentation that summarised the SWOT Analysis that was undertaken for each of the 8 options. 'SWOT Analysis' templates were shared so that individuals had the opportunity to contribute either in writing or orally during the meeting. It was also noted that they had an opportunity to express their views / comments by email (by Thursday, September 12). <p>Option 1 – Status Quo:</p> <ul style="list-style-type: none"> It was explained that Welsh-medium education is included in the 'SWOT Analysis' as the Welsh language must be considered when assessing the options.

Parch • Gwasanaethu • Positif • Gweithio fel tîm • Gwerth am arian
Respect • Serving • Positive • Working as a team • Value for money

- It was also explained that the Minimum Staffing Protection funding contributes a substantial amount to the school budget each year.
- Budget deficit by continuing with the current model and that the school would need to reset the budget to meet the deficit.
- It was noted that £55,000 needed to be invested in the building and £45,000 in the kitchen, should the kitchen be used again. It was explained that Maintenance Department funding is separate from Education funding and £100,000 cannot be deducted from the school budget.
- Quality of education and the interests of the school needs to be added to the 'Strengths'.
- It was stated that it could be argued that small classes can be a strength as well as a weakness.
- Attendees asked whether the Maintenance work needs to be commissioned by the Council, and whether the school could arrange for local contractors to carry out the work. It was explained that any contractor needed to be registered with CHAS in order to manage health and safety risks.
- It was noted that £100,000 is not a huge amount and therefore not a major threat to the option

Option 2 – Change Staff Structure:

- 'Minimum Staffing Protection' funding is an additional contribution that allows the school to employ 1.5 teachers.
- It was noted that the current model of Ysgol Llanaelhaearn was costly in terms of employing a teacher, an Assistant and 1 day of the Headteacher of Ysgol Garndolbenmaen time.
- It was noted that the school has had difficulty in appointing a Headteacher in the past, which is a weakness of the model.

Option 3 – Early Years Observation Unit:

- It was confirmed that a possible location had been identified for the ABC Unit.
- It was noted that this type of unit does not tend to attract more children to the schools.
- It was discussed that there is no demand for behavioural units in the area as a Behaviour Unit had been opened in Penygroes last September.
- 2 exceptions for establishment /placements on school grounds for income; Ysgol y Moelwyn (house on the yard) Ysgol Dyffryn Nantlle (Youth Club).

Option 4 – Formal Federalisation

- It was explained that there is an informal ('soft') federalisation arrangement between Ysgol Llanaelhaearn and Ysgol Garndolbenmaen.
- This federalisation is not 'natural' in terms of how the catchment area lies as Ysgol Llanybi is in the middle of the schools.

- It was explained that formal ('hard') federation would mean that schools' budgets remained separate, and the governing bodies would be abolished with the appointment of a single governing body for the federation.
- Formalising the current model between the schools would not allow sufficient time for non-contact time for the Headteacher.
- A similar federal model had been established between Ysgol Corris and Ysgol Pennal (one formal governing body). There has also been a recent consultation on a formal federation arrangement between Ysgol Talysarn and Ysgol Brynaerau.
- It was noted that a clear threat that was not included in the table was the lack of interest from neighbouring schools to federate.
- It was explained that the option needed to be looked at in more detail and to consider all the neighbouring schools and not just Ysgol Chwilog and Ysgol Garndolbenmaen.
- It was noted that the Area Education Officer would contact the schools. It was emphasised that Ysgol Llanaelhaearn's stakeholders do not need to contact neighbouring schools to discuss the matter.
- It was noted that a federation process would take approximately 9 months (statutory process and consultation).
- It was asked what the anticipated timescale was for feedback from neighbouring schools regarding their interest to federate with Ysgol Llanaelhaearn. It was explained that the intention is to draft possible federalisation models in the coming weeks.
- The importance of achieving the right balance for the Headteacher was emphasised. It was explained that three schools can be challenging in terms of what is practical.
- It was noted that if there was a change of Headteacher in the short term, the new Headteacher would have the right to reject the informal arrangement between Ysgol Garndolbenmaen and Ysgol Llanaelhaearn.
- It was explained that a formal model would give a definite structure and if a new Headteacher would be appointed the responsibility would be part of the job description.
- It was noted that geographically, Ysgol Garndolbenmaen is not the best option.
- Over all opinion - option 4 would be the best solution.

Option 5 – 5 Year Warranty:

- It was noted that the Education Department has not provided such a guarantee to a schools in the past.
- It was noted that the Council can only offer one year guarantee at a time due to the way the authority receives their budget allocation from the Government.
- It was expressed that it would be very difficult to attract children who have already left the Llanaelhaearn catchment area to go to another school, to attend Ysgol Llanaelhaearn. A guarantee would probably only attract new children in the catchment area to the school.

		<p>Option 6 – Establish a Childcare Club:</p> <ul style="list-style-type: none"> • Childcare Club very popular in many areas, but finding qualified providers can be challenging. • Estimated fee for childcare at Ysgol Llanaelhaearn is more expensive compared to other areas, but this may be due to the number of children attending (cheaper if there are more children). • The question was raised if options 5 and 6 can be merged <p>Option 7 – Community Cafe:</p> <ul style="list-style-type: none"> • At least £45,000 would be needed to refurbish the kitchen and the Maintenance Department would probably not prioritise this. An obvious threat. • Hafod Lon is Gwynedd Council's only example of a community café on a school site. • DBS / health and safety risks were identified when mixing pupils with the public. • There would also be a risk regarding how many people would use the café in Llanaelhaearn. <p>Option 8 – Close Ysgol Llanaelhaearn, and educate the pupils at an alternative school:</p> <ul style="list-style-type: none"> • Attendees asked what would happen to the site if Ysgol Llanaelhaearn will close. • It was explained that a Disposal Plan must be followed. The community would receive the first offer in accordance with the Authority's after-use policy. • It was asked which school the pupils would attend and it was explained that this has not yet been discussed, but Ysgol Bro Plenydd is the nearest school with enough capacity to be able to cope with additional numbers. • It was asked if a school could refuse the children. It was explained that a school cannot refuse pupils if it is a catchment area school for Llanaelhaearn. • The question was raised, why is it possible for the school to reject pupils with a formal federalisation process. It was noted that it was a more complex process and the matter should be discussed with the governing body of that particular school. • It was noted that a transport system would be available for the pupils to reach the alternative school in accordance with the Authority's Transport Policy. • It was noted that consideration must be given to the fact that parents can choose to send their children to any school.
4.	NEXT STEPS	<ul style="list-style-type: none"> • It was noted that the intention of the next meeting would be to shortlist (3 or 4 options which will be assessed further) • The question was raised if the process will be discussed with the pupils. The Area Officer noted that he was happy to go to the school but it was not necessary at this time. It would be more appropriate for the Headteacher to discuss directly with the pupils once a formal decision has been made. • The Area Education Officer will discuss the Cabinet Member's recommendation with the Governing Body in November.

		<ul style="list-style-type: none"> Attendees were concerned that the decision had already been made as more information was included with 'Option 8'. It was emphasised that clear guidelines were being followed when considering 'SWOT Analysis' and it was noted that no decision had been made internally on the process. One member expressed the need to add the reason he believed the numbers had reduced in 'Option 5'. It was explained that it was possible for the individual to make an official complaint on the matter and it was noted that that trying to justify reasons for the current situation was not part of the SWOT Analysis exercise for the options. It was explained that the shortlist was decided by reviewing all the options and comments we have received by following a criteria in accordance with the Education Department's objectives. Action: Ysgol Llanaelhaearn Stakeholders to share further comments by email by Thursday *. An electronic copy of the presentation will be shared.
5.	CLOSE	<ul style="list-style-type: none"> Everyone was thanked for attending the meeting and the next meeting will be held in two weeks (23 September)*.

***Since the meeting, it was decided to allow more time to submit further responses and comments, by Monday 16th September 2019, and the next meeting will be held on Monday 30th September 2019 at 7.30pm at Canolfan y Babel, Llanaelhaearn.**

Adolygu Ysgol Llanaelhaearn

19:30 – 21:00, Dydd Llun, 30 Medi 2019

Canolfan Y Babell, Llanaelhaearn

1. **CROESO (Garem Jackson, Pennaeth Addysg)**
2. **GEIRIAU AGORIADOL YR AELOD CABINET DROS ADDYSG (Cyng. Cemlyn Williams)**
3. **CYFLWYNIAD – ASESIAID OPSIYNAU (Gwern ap Rhisiart, Swyddog Addysg Ardal Dwyfor a Meirionnydd)**
5. **CAMAU NESAF**
6. **CLOI**

Ysgol Llanaelhaearn



Parch • Gwasanaethu • Positif • Gweithio fel tîm • Gwerth am arian
Respect • Serving • Positive • Working as a team • Value for money

www.gwynedd.llyw.cymru



Asesiad opsiynau

Gwern ap Rhisiart
Swyddog Addysg Ardal

Parch • Gwasanaethu • Positif • Gweithio fel tîm • Gwerth am arian
Respect • Serving • Positive • Working as a team • Value for money



Agenda

- Asesiad o'r rhestr o opsiynau
- Opsiynau
- Camau nesaf

Parch • Gwasanaethu • Positif • Gweithio fel tîm • Gwerth am arian
Respect • Serving • Positive • Working as a team • Value for money



Rhestr hir o opsiynau

	OPSIYNAU
1.	Gwneud dim - parhau gyda'r sefyllfa bresennol (Y 'Status Quo')
2.	Newid Strwythur Staffio
3.	Uned Arsyliw Blynnyddoedd Cynnar
4.	Ffederaleiddio
5.	Gwarant y bydd yr ysgol ar agor am o leiaf 5 mlynedd
6.	Clwb gofal plant
7.	Caffi Cymunedol
8.	Cau Ysgol Llanaelhaearn a'r disgyblion i'w haddysgu mewn ysgol amgen

Parch • Gwasanaethu • Positif • Gweithio fel tîm • Gwerth am arian
Respect • Serving • Positive • Working as a team • Value for money



Opsiynau

- Rydym wedi ymchwilio'r 8 opsiwn yma.
- Yn dilyn eich mewnbwn, mae canfyddiadau'r 'SWOT analysis' ar gyfer pob opsiwn wedi eu hystyried a'u mesur yn erbyn y meini prawf

Parch • Gwasanaethu • Positif • Gweithio fel tîm • Gwerth am arian
Respect • Serving • Positive • Working as a team • Value for money



Addysg Gynradd o'r Ansawdd Gorau i Blant

"Cynnig addysg o'r ansawdd uchaf posibl fydd yn rhoi'r profiadau, y sgiliau a'r hyder i blant y Sir a'u galluogi i ddatblygu i fod yn dinasyddion dwyieithog, llwyddiannus a chyflawn."

Parch • Gwasanaethu • Positif • Gweithio fel tîm • Gwerth am arian
Respect • Serving • Positive • Working as a team • Value for money



Addysg Gynradd o'r Ansawdd Gorau i Blant

Ffactorau:

1. Maint dosbarthiadau ac amrediad oedran
2. Niferoedd Disgyblion
3. Amgylchedd Dysgu
4. Arweinyddiaeth a Staffio
5. Y Gymuned
6. Adnoddau Ariannol
7. Sefyllfa eithriadol
8. Iaith
9. Ffactorau Daearyddol

Parch • Gwasanaethu • Positif • Gweithio fel tîm • Gwerth am arian
Respect • Serving • Positive • Working as a team • Value for money



	Opsiyonau								
	1. Statws Cwpa	2. Newid strwythur staffio	3. Uned ABC	4. Ffederaleiddio	5. Gwarant o 5 mlynedd	6. Gofal Plant	7. Apor coffi	8. Cau Ysgol Llanaelhaearn	
Meint Prawf	1. Maint dosbarthiadau ac amrediad oedran								
	2. Niferoedd Disgyblion								
	4. Arweinyddiaeth								
	5. Y Gymuned								
	6. Adnoddau Ariannol								
	8. Iaith								
	9. Ffactorau Daearyddol								

Opsiyonau

OPSIYONAU

4. Ffederaleiddio
8. Cau Ysgol Llanaelhaearn a'r disgyblion i'w haddysgu mewn ysgol amgen

Parch • Gwasanaethu • Positif • Gweithio fel tîm • Gwerth am arian
Respect • Serving • Positive • Working as a team • Value for money



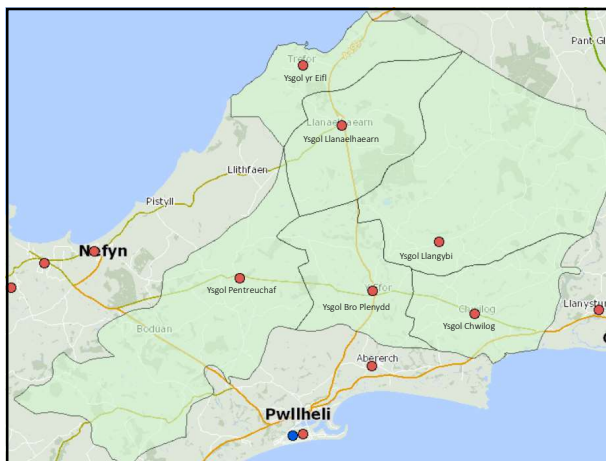
4. Ffederaleiddio ffurfiol

4. Cryfderau / Strengths	4. Gwendidau / Weaknesses
<ul style="list-style-type: none"> • Ffurfioli y trefniant o gydweithio ¹⁰ • Cadw ysgol yn Llanaelhaearn ⁵ • Addysg cyfrwng Cymraeg i ddysgwyr ⁸ • Ysgol o fewn pellder rhesymol i gartref dysgwyr y dalgylch⁹ • Model ffurfiol yn rhoi strwythur pendant ac busai rhaid i unrhyw Bennaeth newydd gytuno â hyn ⁴ • Ansawdd yr addysg a buddiannau'r ysgol ¹⁰ 	<ul style="list-style-type: none"> • Niferoedd ddim yn ddigon i ganiatáu amser digyswilt i'r Pennaeth⁴ • Dosbarthiadau bychain ⁵ • Cost y disgybl uchel ⁶ • Niferoedd isel ² • Ansicrwydd yn parhau ynglŷn â chynnalwydded darpariaeth addysg yn Llanaelhaearn ⁵
4. Cyfleon / Opportunities	4. Byggythiadau / Threats
<ul style="list-style-type: none"> • Arbed amser y Pennaeth ⁴ • Un Corff Llywodraethol ar y tair ysgol ⁴ • Rhannu adnoddau ⁶ • Cyfle i sefydlu clwb gofal plant i geisio cynyddu niferoedd a chreu incwm ² • Cyfle i gyflogi staff ar draws y ffederasiwn yn y dyfodol⁸ 	<ul style="list-style-type: none"> • Posiblirwydd o ddiffyg yn y gyllideb ⁶ • Costau cynnal a chadw yr adeilad ⁵ • Llefydd gweigion ² • Rhagamcanion niferoedd ² • Canran uchel o blant yn mynychu ysgolion all-dalgylch ⁵ • Diffyg diddordeb gan yr ysgolion cyfagos ¹⁰

4. Ffederaleiddio ffurfiol

- Proses statudol
- Rhwng 2 a 6 o ysgolion
- Un corff llywodraethu
- 1-2 riant-lywodraethwr o bob ysgol
- Ysgolion yn cadw eu hunaniaeth (gwisg ysgol, enw, ethos) os yn dymuno
- Cyllidebau yn parhau ar wahân
- Cyfleon i rannu adnoddau, pontio disgyblion a mwy
- Yn y dyfodol, opsiwn i gyflogi staff ar draws y ffederasiwn

Parch • Gwasanaethu • Positif • Gweithio fel tîm • Gwerth am arian
Respect • Serving • Positive • Working as a team • Value for money



Opsiyau

OPSIYNAU

4. Ffederaleiddio
8. Cau Ysgol Llanaelhaearn a'r disgyblion i'w haddysgu mewn ysgol amgen

Parch • Gwasanaethu • Positif • Gweithio fel tîm • Gwerth am arian
Respect • Serving • Positive • Working as a team • Value for money



Camau nesaf / Next steps

- Cynnal asesiadau effaith yr opsiynau:
 - Ieithyddol
 - Cymunedol
 - Cydraddoldeb
 - Trefniadau Teithio
 - Llesiant
 - Ansawdd a Safonau Addysg
- Aelod Cabinet i gyflwyno adroddiad i Gabinet Cyngor Gwynedd.

Parch • Gwasanaethu • Positif • Gweithio fel tîm • Gwerth am arian
Respect • Serving • Positive • Working as a team • Value for money



Ysgol Llanaelhaearn



Parch • Gwasanaethu • Positif • Gweithio fel tîm • Gwerth am arian
Respect • Serving • Positive • Working as a team • Value for money

www.gwynedd.llyw.cymru



Options Assessment

Gwern ap Rhisiart
Area Education Officer

Parch • Gwasanaethu • Positif • Gweithio fel tîm • Gwerth am arian
Respect • Serving • Positive • Working as a team • Value for money



Agenda

- Assessing the list of options
- Options
- Next steps

Parch • Gwasanaethu • Positif • Gweithio fel tîm • Gwerth am arian
Respect • Serving • Positive • Working as a team • Value for money



List of Options

OPTIONS	
1.	Continue with the 'status quo'
2.	Changing Staffing Structure
3.	Early Years Observation Unit
4.	Federalisation
5.	Guarantee that the school will be open for at least 5 years
6.	Childcare club
7.	Community Café
8.	Close Ysgol Llanaelhaearn and pupils to be educated in an alternative school

Parch • Gwasanaethu • Positif • Gweithio fel tîm • Gwerth am arian
Respect • Serving • Positive • Working as a team • Value for money



Options

- We have researched these 8 options.
- Following your input, the SWOT analysis findings for each option have been considered and measured against the criteria

Parch • Gwasanaethu • Positif • Gweithio fel tîm • Gwerth am arian
Respect • Serving • Positive • Working as a team • Value for money



Excellent Primary Education for Children

“Provide education of the best possible quality that will provide the county’s children with the experiences, skills and confidence to develop into bilingual, successful and well-rounded citizens.”

Parch • Gwasanaethu • Positif • Gweithio fel tîm • Gwerth am arian
Respect • Serving • Positive • Working as a team • Value for money



Excellent Primary Education for Children

Factors:

1. Class sizes
2. Pupil Population and Numbers
3. The Child's Learning Environment
4. Leadership
5. The Community
6. Financial Resources
7. Specific request for consideration or an exceptional situation
8. The Welsh Language
9. Geographical Factors

Parch • Gwasanaethu • Positif • Gweithio fel tîm • Gwerth am arian
Respect • Serving • Positive • Working as a team • Value for money



	Options							
	1. Status Quo	2. Change staffing structure	3. ABC Unit	4. Federalisation	5. 5 year warranty	6. Child care	7. Open a café	8. Close Ysgol Llanaelhaearn
1. Class sizes								
2. Pupil Population and Numbers								
4. Leadership								
5. The Community								
6. Financial Resources								
8. The Welsh Language								
9. Geographical Factors								

Options

OPTIONS

4. **Federalisation**
8. **Close Ysgol Llanaelhaearn and pupils to be educated in an alternative school**

Parch • Gwasanaethu • Positif • Gweithio fel tîm • Gwerth am arian
Respect • Serving • Positive • Working as a team • Value for money



4. Formal Federalisation

4. Cryfderau / Strengths

- Formalise the collaboration arrangement ¹⁰
- Keep a school presence in Llanaelhaearn ⁵
- Welsh-medium education for learners ⁸
- School within a reasonable distance of the catchment area learners' home ⁹
- A formal model with a definite structure and any new Headteacher would have to agree to the arrangement ⁴
- The quality of education and the interests of the school ¹⁰

4. Gwendidau / Weaknesses

- Numbers not enough to allow non-contact time for Headteacher ⁴
- Small classes ¹
- High cost per pupil ⁶
- Low Numbers ²
- Uncertainty remains regarding the sustainability of education provision in Llanaelhaearn ⁵

4. Cyfleon / Opportunities

- Release Headteacher's time ⁴
- One Governing Body for the two or more schools ⁴
- To share resources ⁶
- Opportunity to set up a childcare club to try to increase numbers and generate income ¹
- Opportunity to employ staff across the federation in the future ⁴

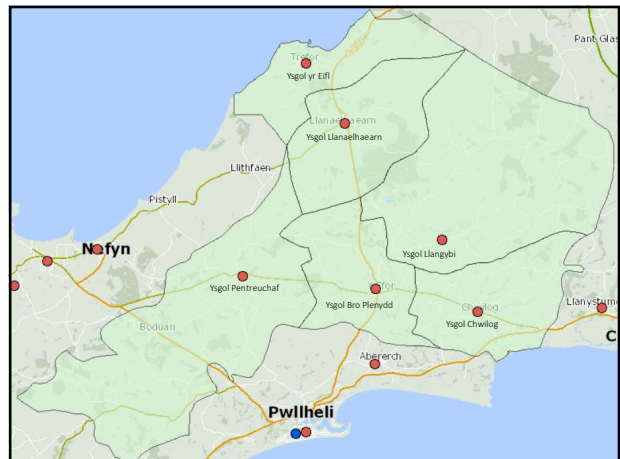
4. Byggythiadau / Threats

- Possibility of budget deficit ⁶
- Building maintenance costs ⁵
- Surplus places ²
- Projections of numbers ²
- High percentage of children attending schools outside the catchment area ⁵
- Lack of interest from neighbouring schools ¹⁰

4. Formal Federalisation

- Statutory process
- Between 2 and 6 schools
- One governing body
- 1-2 parent governors from each school
- Schools retain their identity (school uniform, name, ethos) if desired
- Budgets remain separate
- Opportunities to share resources, transition pupils and more
- In the future, an option to employ staff across the federation

Parch • Gwasanaethu • Positif • Gweithio fel tîm • Gwerth am arian
Respect • Serving • Positive • Working as a team • Value for money



Options

OPTIONS

4. **Federalisation**
8. **Close Ysgol Llanaelhaearn and pupils to be educated in an alternative school**



Parch • Gwasanaethu • Positif • Gweithio fel tîm • Gwerth am arian
Respect • Serving • Positive • Working as a team • Value for money

Next steps

- **Impact assessments for options:**
 - Language
 - Community
 - Equality
 - Travel Arrangements
 - Well-being
 - Quality and Standards in Education
- **Cabinet Member to present a report to Gwynedd Council's Cabinet.**



Parch • Gwasanaethu • Positif • Gweithio fel tîm • Gwerth am arian
Respect • Serving • Positive • Working as a team • Value for money

Cyfarfod o: Adolygu Ysgol Llanaelhaearn 3	Dyddiad: 30/09/2019 7:30yh Lleoliad: Canolfan y Babel, Llanaelhaearn
--	---

Presennol:	<u>Swyddogion:</u> Gwern ap Rhisiart (GapRh); Garem Jackson (GJ); Cyng. Cemlyn Williams (CW); Ffion Jones (FfJ); Betsan Williams (BW);
	<u>Ar ran Llywodraethwyr Ysgol Llanaelhaearn:</u> 7 Aelod
	<u>Rhieni/Teulu</u> 2 Aelod
Ymddiheuriadau:	

Rhif Eitem	Eitem / Pwnc	Gweithrediad
1.	CROESO	<ul style="list-style-type: none"> Croesawyd pawb i'r trydydd cyfarfod lleol gan y Pennaeth Addysg, Garem Jackson. Hwn fydd y cyfarfod diwethaf ac yn cyflwyno'r opsiynau terfynol. Nodwyd ei fod yn farn broffesiynol yr Adran Addysg ac felly mae pob ymdrech wedi ei wneud i gael y wybodaeth. Pwysleisiwyd ei bod wastad yn opsiwn i wneud dim, sef parhau gyda'r sefyllfa bresennol (y 'Status Quo') ac mai'r opsiynau sydd yn cael eu cyflwyno heno yw'r rhai y mae'r Adran Addysg o'r farn a fyddai'n welliant ar y sefyllfa bresennol. Pwysleisiwyd mai y Cabinet fydd yn gwneud y penderfyniad terfynol gydag argymhelliad yr Aelod Cabinet dros Addysg.
2.	GEIRIAU AGORIADOL YR AELOD CABINET DROS ADDYSG	<ul style="list-style-type: none"> Ategwyd y croeso gan yr Aelod Cabinet Dros Addysg, Y Cyng. Cemlyn Williams. Nodwyd y bydd asesiadau effaith yn cael eu cynnal sef asesiadau ieithyddol, llesiant, teithio a.y.b. Nodwyd bod bwriad i fynd i Gabinet ar 5 Tachwedd a bydd y penderfyniad terfynol yn cael ei wneud gan aelodau'r Cabinet.
3.	CYFLWYNIAD ASESIAD OPSIYNAU	<ul style="list-style-type: none"> Diolchwyd am yr ymatebion yn dilyn y cyfarfod diwethaf ar gyfer y "SWOT analysis". Eglurwyd mai amcan y cyfarfod yw i fynd drwy'r opsiynau ac i egluro camau nesaf y broses. Aethpwyd drwy'r 8 opsiwn a gafodd eu trafod yn y cyfarfod blaenorol. Mae'r adran wedi edrych yn fanwl ar yr opsiynau ac wedi ymgorffori'r sylwadau ac erbyn hyn yn y sefyllfa i fesur y meini prawf penodol sydd yn y Strategaeth Addysg Gynradd o'r Ansawdd Gorau i Blant Gwynedd. Yn 2018, bu i'r Cabinet fabwysiadu egwyddorion addysg addas i bwrpas fel uchelgais i resymoli amrediad oedran mewn dosbarthiadau ac amser teg i benaethiaid arwain eu hysgolion. Eglurwyd mai sail y drafodaeth fyddai gwerthuso yr opsiynau yn erbyn ffactorau y Strategaeth Addysg Gynradd o'r Ansawdd Gorau i Blant Gwynedd. Dangoswyd y 9 ffactor o'r ddogfen ac eglurwyd fod 2 wedi'u diystyru yn barod sef Amgylchedd Dysgu a Sefyllfa Eithriadol. Y rheswm am hyn yw nad sefyllfa ble cynigr adeiladu ysgol newydd yw hon, a hefyd y rheswm dros gynnal y cyfarfodydd hyn yw'r sefyllfa eithriadol ac argyfyngus o niferoedd isel y mae'r ysgol yn ei wynebu eisoes. Rhannwyd y ddogfen ddrafft o gymharu'r modelau i aelodau o'r cyfarfod a rhoddwyd amser i bawb fynd drwy'r tabl. Eglurwyd mai pwrpas y ddogfen yw i ystyried yr 8 opsiwn yn erbyn y 7 ffactor sydd yn y strategaeth. Mynegwyd bod nifer o ffactorau coch yn gyson ar hyd y tabl gan nad yw rhai o'r

		<p>opsiynau yn newid sefyllfa bresennol yr ysgol o safbwynt y ffactor penodol hwnnw. Rhoddwyd y cyfle i aelodau i wirio'r ffeithiau ac i gynnwys unrhyw sylwadau cyn diwedd dydd Mercher, 2 Hydref.</p> <p>Ffederaleiddio</p> <ul style="list-style-type: none"> • Trafodwyd yr opsiwn ffederaleiddio caled, sef trefniant ffurfiol, nid y trefniant meddal sydd ar hyn o bryd. • Mae'r adran wedi edrych i mewn i gryfderau, gwendidau, cyfleoedd a bygythiadau ffederaleiddio. Adroddwyd yn ystod y broses o gyflwyno cynigion i ffederaleiddio mae risg yn bodoli y gall ysgol arall wrthwynebu'r cais. Eglurwyd bod model ffederaleiddio yn golygu diddymu cyrff llywodraethu yr ysgolion a sefydlu un corff newydd llywodraethol ar gyfer y ffederasiwn. Bydd ffederaleiddio ffurfiol yn golygu bydd angen mynd drwy'r broses statudol o ymgynghori. Bydd cyllidebau yn parhau ar wahân, ond byddai cyfle i rannu adnoddau a chyflogi staff ar draws yr ysgolion (ond dim ond y staff a benodir yn dilyn sefydlu'r corff newydd, nid staff presennol yr ysgolion unigol). • Bydd rhaid cael parodrwyd ysgolion eraill i gydweithio ar gyfer yr opsiwn yma; fel arall bydd rhaid dechrau proses ffurfiol tebyg i adolygu sefyllfa'r ysgolion hynny. <p>Cau Ysgol Llanaelhaearn a'r disgyblion i'w haddysgu mewn ysgol amgen</p> <ul style="list-style-type: none"> • Trafodwyd yr opsiwn o gau Ysgol Llanaelhaearn.
4.	CAMAU NESAF	<ul style="list-style-type: none"> • Eglurwyd mai'r camau nesaf fydd edrych ar yr opsiynau yma ac edrych yn fwy manwl ar yr asesiadau. Mi fydd yr holl wybodaeth (gan gynnwys y ddogfen gymharu modelau, asesiadau, strategaeth a.y.b.) mewn pecyn a fydd yn cael ei gyflwyno i'r Cabinet ar 5 Tachwedd. • Gofynnwyd a oes modd cyflwyno'r adroddiad Cabinet i'r Corff yn ogystal. Bydd y Swyddog Addysg yn cyflwyno'r adroddiad i'r Corff Llywodraethu. Mae'r adroddiad yn gyhoeddus ar wefan y cyngor oddeutu 25 Hydref a bydd cyfle i'r Aelod Lleol gyflwyno ei sylwadau. • Gofynnwyd i FfJ rannu'r strategaeth ar e-bost i'r Llywodraethwyr. • Bydd angen i aelodau o'r cyfarfod gyflwyno unrhyw sylwadau ar e-bost erbyn dydd Mercher, 2 Hydref ar gyfer y ddogfen gymharu modelau.
5.	CLOI	<ul style="list-style-type: none"> • Diolchwyd i bawb am fynychu'r cyfarfod ac am eu mewnbwn drwy gydol y broses.

Ysgol Llanaelhaearn Review Meeting

Addysg

Meeting: Ysgol Llanaelhaearn Review 3	Date: 30/09/2019 7:30pm Location: Canolfan y Babell, Llanaelhaearn
--	---

Present:	<p><u>Officers:</u> Gwern ap Rhisiart (GapRh); Garem Jackson (GJ); Cyng. Cemlyn Williams (CW); Ffion Jones (FfJ); Betsan Williams (BW);</p> <p><u>On behalf of the Governors of Ysgol Llanaelhaearn:</u> 7 Members</p> <p><u>Parents/Family</u> 2 Members</p>
Apologies:	

Item Number	Item / Subject	Actions
1.	WELCOME	<ul style="list-style-type: none"> Head of Education Garem Jackson welcomed everyone to the third local meeting. This will be the last meeting and will present the final options. It was noted that it was the professional opinion of the Education department and therefore every effort has been made to obtain the information. It was emphasised that it was always an option to do nothing, namely to continue with the 'Status Quo' and that the options being presented tonight were those that the Education Department was of the opinion which would be an improvement on the current situation. It was also emphasised that the Cabinet would make the final decision with the recommendation of the Cabinet Member for Education
2.	CABINET MEMBER FOR EDUCATION'S OPENING WORDS	<ul style="list-style-type: none"> Cabinet Member for Education, Cllr. Cemlyn Williams. Noted that impact assessments will be carried out such as linguistic, well-being, travel etc. It was noted that there is an intention to go to Cabinet on 5 November and the final decision would be made by Cabinet members.
3.	OPTIONS ASSESSMENT PRESENTATION	<ul style="list-style-type: none"> Thanks were expressed for the responses following the last meeting for the SWOT analysis. It was explained that the objective of the meeting is to go through the options and explain the next steps in the process. The 8 options discussed at the previous meeting were discussed. The department has looked in detail through the options and incorporated the comments and is now in a position to measure the specific criteria contained in the Strategy for Primary Education of the Best Quality for Children in Gwynedd. Since the document's introduction, the cabinet has adopted the educational principles that are fit for purpose as an ambition to rationalise the age range in classes and a fair time for headteachers to lead their schools. It was explained that the basis of the discussion at the meeting was the factors of the Excellent Primary Education for Children in Gwynedd Strategy when weighing up the options. The 9 factors of the document were shown and it was explained that 2 factors would not be used as a criterion, namely Learning Environment and Exceptional Situation. This is because it is not a situation where it is proposed to build a new school, and also the reason for holding these meetings is the

Parch • Gwasanaethu • Positif • Gweithio fel tîm • Gwerth am arian
Respect • Serving • Positive • Working as a team • Value for money

		<p>exceptional and critical situation of low numbers that the school is already facing.</p> <ul style="list-style-type: none"> • The draft document comparing the models was distributed to members of the meeting and everyone was given time to go through the table. It was explained that the significance of the document is to go through the 8 options against the 7 factors in the strategy. • It was stated that a number of red factors are consistent across the table as some of the options do not change the current position of the school in terms of that particular factor. It was noted that if members felt that the comments needed to be changed or that facts were incorrect, this would need to be responded to the officers before the end of Wednesday, 2 October. <p>Federalisation</p> <ul style="list-style-type: none"> • The option of hard federalisation, a formal arrangement not the current soft arrangement, was discussed. • The department has looked at the strengths, weaknesses, opportunities, threats of federalisation. It was reported that there is a risk of another school refusing to federate but it is possible to force a school to federate. It was explained that a federation model meant abolishing the governing bodies of the schools and establishing one new governing body for the federation. Formal federalisation will mean going through the statutory consultation process. Budgets will remain separate, but there would be an opportunity to share resources and employ staff across schools. • This option will require the willingness of other schools to collaborate, otherwise a similar formal process of reviewing the situation of those schools will have to be initiated. <p>Close Llanaelhaearn School and pupils to educate them in alternative school</p> <ul style="list-style-type: none"> • The option of closing Ysgol Llanaelhaearn was discussed.
4.	NEXT STEPS	<ul style="list-style-type: none"> • It was explained that the next steps would be to look at these options and look in more detail at the assessments. Everything included (including the model comparison document, assessments, strategy etc.) will be presented to the Cabinet on 5 November. • It was asked if the Cabinet report could also be presented to the Body. The Education Officer will present the report to the governing body. The report is made public on the council's website around 25 October and the Local Member will have had an opportunity to include his comments in it, in his capacity as the Local Member for the Ysgol Llanaelhaearn catchment area. • FfJ was asked to email the strategy to members of the Governors. • Members of the meeting will need to submit any comments via email by Wednesday, 2 October for the model comparison document.
5.	TO CLOSE	<ul style="list-style-type: none"> • Everyone was thanked for attending the meeting and for their input throughout the process.

Yn dilyn y cyfarfodydd lleol, mae crynodeb isod o'r sylwadau a dderbyniwyd:

Cyfarfod 1 – 24 Mehefin 2019

1 cais i addasu'r cofnodion.

Cyfarfod 2 – 9 Medi 2019

3 ymateb:

1 yn nodi y byddai ymglymiad gan yr Awdurdod i sicrhau fod yr ysgol yn agored am gyfnod penodol yn rhoi cyfle i godi niferoedd, ac i sefydlu ysgol feithrin.

1 yn nodi opsiynau sy'n cael eu ffafrio gan y Corff Llywodraethu, sef ffederaleiddio, gwarant o 5 mlynedd neu sefydlu clwb gofal plant.

1 yn gwneud cais i'r Adran Addysg gynnal asesiad stoc tai ar gael yn Llanaelhaearn ac yr ardal gyfagos (yn cynnwys tai fyddai yn gallu bod ar gael yn y dyfodol agos - gwyddom am ddau dy fyddai bosib fod ar gael i deuluoedd yn y pentref). Hefyd, asesiad o'r teuluoedd Cymreig gyda diddordeb byw yn yr ardal yma/enwau ar y rhestr, a rhestr fer o bobl fyddai bosib eu hannog i'r pentref.

Cyfarfod 3 – 23 Medi 2019

Ni chafwyd fewnbwn yn dilyn y cyfarfod hwn.

Yn dilyn y trydydd cyfarfod, bu i'r Adran Addysg gael eu hysbysu o ddiwrnod agored a fyddai'n cael ei gynnal ar y 23 Hydref 2019 er mwyn casglu barn yn lleol os oes angen am dai ar gyfer pobl leol yn ardal Llanaelhaearn.

Following the local meetings, a summary of the responses received are below:

Meeting 1 - 24 June 2019

1 request to modify the minutes.

Meeting 2 - 9 September 2019

3 responses:

1 noting that Authority's commitment to ensure that the school is open for a fixed period would provide an opportunity to increase numbers, and to establish a nursery school.

1 sets out the Governing Body's preferred options of federalisation, 5 year guarantee or setting up a childcare club.

1 request that the Education Department carry out a housing stock assessment available in Llanaelhaearn and the surrounding area (including houses that could be available in the near future - we know of two houses that could be available to families in the village). Also, an assessment of the Welsh families with an interest in this area/names on the list, and a short list of people who could be encouraged into the village.

Meeting 3 - 23 September 2019

There was no input following this meeting.

Following the third meeting, the Education Department was informed of an open day to be held on 23 October 2019 to gather local views on the need for housing for local people in the Llanaelhaearn area.